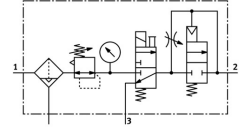
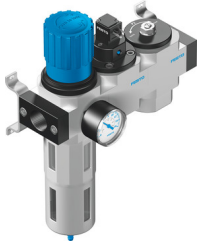


# Air preparation unit LFR-1/8-D-MINI-KD-A

Part number: 185744

FESTO



## Data sheet

General operating condition

| Feature                          | Value                                                                           |
|----------------------------------|---------------------------------------------------------------------------------|
| Size                             | Mini                                                                            |
| Series                           | D                                                                               |
| Actuator lock                    | Rotary knob with detent                                                         |
| Mounting position                | Vertical +/- 5°                                                                 |
| Grade of filtration              | 40 µm                                                                           |
| Condensate drain                 | Fully automatic                                                                 |
| Structural design                | Shut off valve<br>Filter regulator with pressure gauge<br>Safety start-up valve |
| Max. condensate volume           | 22 ml                                                                           |
| Bowl guard                       | Metal bowl guard                                                                |
| Symbol                           | 00991572                                                                        |
| Pressure gauge                   | with pressure gauge                                                             |
| Operating pressure               | 0.3 MPa ... 1.2 MPa                                                             |
| Operating pressure               | 3 bar ... 12 bar                                                                |
| Operating pressure               | 43.5 psi ... 174 psi                                                            |
| Pressure regulation range MPa    | 0.25 MPa ... 1.2 MPa                                                            |
| Pressure regulation range        | 2.5 bar ... 12 bar                                                              |
| Pressure regulation range psi    | 36.25 psi ... 174 psi                                                           |
| Max. pressure hysteresis         | 0.015 MPa                                                                       |
| Max. pressure hysteresis         | 0.15 bar                                                                        |
| Max. pressure hysteresis         | 2.175 psi                                                                       |
| Standard nominal flow rate       | 595 l/min                                                                       |
| Operating medium                 | Compressed air as per ISO 8573-1:2010 [-:-:-]<br>Inert gas                      |
| Corrosion resistance class (CRC) | 2 - Moderate corrosion stress                                                   |
| LABS (PWIS) conformity           | VDMA24364-B1/B2-L                                                               |
| Air quality class at the output  | Compressed air as per ISO 8573-1:2010 [7:8:4]<br>Inert gas                      |
| Temperature of medium            | -10 °C ... 60 °C                                                                |
| Ambient temperature              | -10 °C ... 60 °C                                                                |
| Product weight                   | 900 g                                                                           |
| Type of mounting                 | Optionally:<br>Line installation<br>With accessories                            |
| Pneumatic connection 1           | G1/8                                                                            |
| Pneumatic connection 2           | G1/8                                                                            |

| Feature          | Value         |
|------------------|---------------|
| Housing material | Die-cast zinc |
| Material of bowl | PC            |