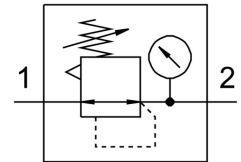



Pressure regulator LR-1/2-D-MIDI-NPT

Part number: 173660

FESTO



 General operating condition

Data sheet

| Feature | Value |
|--|---|
| Size | Midi |
| Series | D |
| Mounting position | Any |
| Controller function | Outlet pressure constant |
| Symbol | 00991538 |
| Operating pressure | 1.6 MPa |
| Operating pressure | 16 bar |
| Pressure regulation range | 0.5 bar ... 12 bar |
| Max. pressure hysteresis | 0.02 MPa |
| Max. pressure hysteresis | 0.2 bar |
| Max. pressure hysteresis | 2.9 psi |
| Standard nominal flow rate | 3500 l/min |
| Operating medium | Compressed air as per ISO 8573-1:2010 [7:4:4] Inert gas |
| Information on operating and pilot media | Operation with oil lubrication possible (required for further use) |
| Corrosion resistance class (CRC) | 2 - Moderate corrosion stress |
| LABS (PWIS) conformity | VDMA24364-B1/B2-L |
| Air quality class at the output | Compressed air as per ISO 8573-1:2010 [7:4:4] Inert gas |
| Temperature of medium | -10 °C ... 60 °C |
| Ambient temperature | -10 °C ... 60 °C |
| Product weight | 720 g |
| Type of mounting | Optionally: Front panel mounting Line installation With mounting bracket |
| Pneumatic connection 1 | 1/2 NPT |
| Pneumatic connection 2 | 1/2 NPT |
| Note on materials | RoHS-compliant |
| Seals material | NBR |
| Housing material | Die-cast zinc |