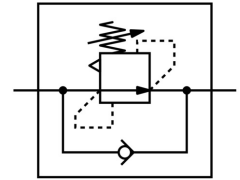


# Differential pressure regulator LRL-3/8-QS-10

Part number: 153519

FESTO



 General operating condition

## Data sheet

| Feature                                  | Value   |
|--|---|
| Controller function                      | Differential pressure constant<br>With return flow function                   |
| Pneumatic connection 1                   | G3/8  |
| Pneumatic connection 2                   | QS-10   |
| Type of mounting                         | Screw-in  |
| Nominal flow rate, open                  | 476 l/min   |
| Pressure regulation range                | 2 bar ... 6 bar   |
| Inlet pressure 1 MPa                     | 0 MPa ... 0.9 MPa   |
| Inlet pressure 1                         | 0 bar ... 9 bar   |
| Inlet pressure 1 psi                     | 0 psi ... 130.5 psi   |
| Ambient temperature                      | 0 °C ... 60 °C  |
| Housing material                         | PBT-reinforced  |
| Operating medium                         | Compressed air as per ISO 8573-1:2010 [7:-:-]                                 |
| Actuator lock                            | Counter-locking   |
| Mounting position                        | Any   |
| Structural design                        | Directly controlled piston regulator<br>with continuous compressed air supply |
| Symbol                                   | 00991535  |
| Nominal flow rate, closed                | 423 l/min   |
| Information on operating and pilot media | Operation with oil lubrication possible (required for further use)            |
| LABS (PWIS) conformity                   | VDMA24364-B1/B2-L   |
| Product weight                           | 74 g  |
| Material of screwed plug                 | Brass, nickel-plated  |
| Note on materials                        | RoHS-compliant  |
| Material of threaded seal                | PTFE  |