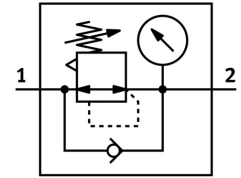


Pressure regulator LRS-1/4-D-7-I-MINI

Part number: 194615

FESTO



 General operating condition

Data sheet

Feature	Value
Size	Mini
Series	D
Actuator lock	Rotary knob with integrated lock
Mounting position	Any
Structural design	Directly controlled diaphragm regulator
Controller function	Outlet pressure constant With primary pressure compensation With secondary exhausting With return flow function
Symbol	00991558
Pressure gauge	with pressure gauge
Operating pressure	0.1 MPa ... 1.6 MPa
Operating pressure	1 bar ... 16 bar
Pressure regulation range	0.5 bar ... 7 bar
Max. pressure hysteresis	0.02 MPa
Max. pressure hysteresis	0.2 bar
Max. pressure hysteresis	2.9 psi
Standard nominal flow rate	1600 l/min
Operating medium	Compressed air as per ISO 8573-1:2010 [7:4:4] Inert gas
Information on operating and pilot media	Operation with oil lubrication possible (required for further use)
LABS (PWIS) conformity	VDMA24364-B1/B2-L
Air quality class at the output	Compressed air as per ISO 8573-1:2010 [7:4:4] Inert gas
Temperature of medium	-10 °C ... 60 °C
Ambient temperature	-10 °C ... 60 °C
Product weight	500 g
Type of mounting	Front panel mounting Line installation With accessories
Pneumatic connection 1	G1/4
Pneumatic connection 2	G1/4
Note on materials	RoHS-compliant
Material of sub-base	Die-cast zinc
Seals material	NBR
Housing material	Die-cast zinc