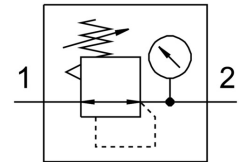



# Pressure regulator LRS-3/8-D-MIDI

Part number: 194634

FESTO



 General operating condition

## Data sheet

| Feature                                  | Value   |
|--|---|
| Size                                     | Midi  |
| Series                                   | D   |
| Actuator lock                            | Rotary knob with integrated lock  |
| Mounting position                        | Any   |
| Structural design                        | Directly controlled diaphragm regulator   |
| Controller function                      | Outlet pressure constant<br>With primary pressure compensation<br>With secondary exhausting |
| Symbol                                   | 00991538  |
| Pressure gauge                           | with pressure gauge   |
| Operating pressure                       | 0 MPa ... 1.6 MPa   |
| Operating pressure                       | 0 bar ... 16 bar  |
| Pressure regulation range                | 0.5 bar ... 12 bar  |
| Max. pressure hysteresis                 | 0.02 MPa  |
| Max. pressure hysteresis                 | 0.2 bar   |
| Max. pressure hysteresis                 | 2.9 psi   |
| Standard nominal flow rate               | 3200 l/min  |
| Operating medium                         | Compressed air as per ISO 8573-1:2010 [7:4:4]<br>Inert gas                                  |
| Information on operating and pilot media | Operation with oil lubrication possible (required for further use)                          |
| Corrosion resistance class (CRC)         | 2 - Moderate corrosion stress   |
| LABS (PWIS) conformity                   | VDMA24364-B1/B2-L   |
| Air quality class at the output          | Compressed air as per ISO 8573-1:2010 [7:4:4]<br>Inert gas                                  |
| Temperature of medium                    | -10 °C ... 60 °C  |
| Ambient temperature                      | -10 °C ... 60 °C  |
| Product weight                           | 1250 g  |
| Type of mounting                         | Front panel mounting<br>Line installation<br>With accessories                               |
| Pneumatic connection 1                   | G3/8  |
| Pneumatic connection 2                   | G3/8  |
| Note on materials                        | RoHS-compliant  |
| Material of sub-base                     | Die-cast zinc   |
| Seals material                           | NBR   |
| Housing material                         | Die-cast zinc   |