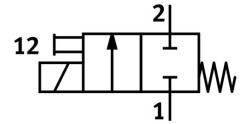


Air solenoid valve MFH-2-M5

Part number: 4573

FESTO



[PDF](#) General operating condition

Data sheet

| Feature | Value |
|--|--|
| Valve function | 2/2, closed, monostable |
| Actuation type | Electrical |
| Standard nominal flow rate | 75 l/min |
| Pneumatic working port | M5 |
| Operating pressure | 0 MPa ... 0.8 MPa |
| Operating pressure | 0 bar ... 8 bar |
| Structural design | Plate seat |
| Reset method | Mechanical spring |
| Nominal width | 1.5 mm |
| Exhaust air function | Without flow control option |
| Sealing principle | Soft |
| Mounting position | Any |
| Manual override | Detenting |
| Type of control | Direct |
| Flow direction | Non-reversible |
| Symbol | 00991398 |
| Switching time off | 5 ms |
| On switching time | 6.2 ms |
| Operating medium | Compressed air as per ISO 8573-1:2010 [7:4:4] |
| Information on operating and pilot media | Operation with oil lubrication possible (required for further use) |
| LABS (PWIS) conformity | VDMA24364-B2-L |
| Temperature of medium | -15 °C ... 60 °C |
| Ambient temperature | -15 °C ... 40 °C |
| Type of mounting | With through-hole |
| Pneumatic connection 1 | M5 |
| Pneumatic connection 2 | M5 |