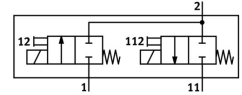
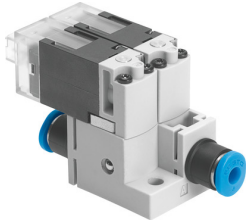


# Vacuum valve MHA1-2X2/2G-1,5-3-3-3

Part number: 562051

FESTO



 General operating condition

## Data sheet

Feature	Value
Valve function	2x2/2 closed, monostable
Actuation type	Electrical
Width	20 mm
Standard nominal flow rate	30 l/min
Pneumatic working port	QS-3
Operating voltage	24V DC
Operating pressure	0 bar ... 1.5 bar
Reset method	Mechanical spring
Degree of protection	IP40
CE marking (see declaration of conformity)	As per EU EMC directive As per EU RoHS directive
UKCA marking (see declaration of conformity)	To UK instructions for EMC To UK RoHS instructions
Nominal width	1.5 mm
Width dimension	20 mm
Exhaust air function	Without flow control option
Sealing principle	Soft
Mounting position	Any
Manual override	Non-detenting
Type of control	Direct
Flow direction	Non-reversible
Symbol	00992254
Signal status display	LED
Operating pressure, reversible	-0.95 bar ... 0 bar
Suitability for vacuum	yes
Standard flow rate	30 l/min
Max. switching frequency	10 Hz
Switching time off	6 ms
On switching time	6 ms
Duty cycle	100%
Coil characteristics	24 V DC: low-current phase 0.7 W, high-current phase 3.0 W
Permissible voltage fluctuations	+/- 10 %
Operating medium	Compressed air as per ISO 8573-1:2010 [7:4:4]
Information on operating and pilot media	Operation with oil lubrication possible (required for further use)
Vibration resistance	Transport application test with severity level 2 as per FN 942017-4 and EN 60068-2-6

Feature	Value
Shock resistance	Shock test with severity level 2 as per FN 942017-5 and EN 60068-2-27
Corrosion resistance class (CRC)	2 - Moderate corrosion stress
LABS (PWIS) conformity	VDMA24364-B2-L
Storage temperature	-20 °C ... 60 °C
Temperature of medium	-5 °C ... 50 °C
Ambient temperature	-5 °C ... 50 °C
Product weight	30.6 g
Max. cable length	30 m
Electrical connection	KMH plug
Type of mounting	With through-hole
Pneumatic connection 1	QS-3
Pneumatic connection 11	QS-3
Pneumatic connection 2	QS-3
Note on materials	RoHS-compliant
Seals material	FPM HNBR NBR
Housing material	PA-reinforced PPS-reinforced
Material of screws	Steel