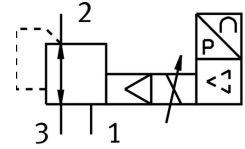


Proportional pressure control valve MPPE-3-1/2- -B

Part number: 164332

FESTO



 General operating condition

Data sheet

Feature	Value
Nominal width pressurization	11 mm
Exhaust nominal width	12 mm
Actuation type	Electrical
Sealing principle	Soft
Mounting position	Any
Structural design	Pilot-controlled piston control valve
Safety instructions	MPPE-B safety position: if the supply cable breaks, the outlet pressure is maintained in uncontrolled form.
Symbol	00995304
Operating pressure	0 bar ... 10 bar
Pressure regulation range	0 bar ... 10 bar
Inlet pressure 1	11 bar ... 12 bar
Max. pressure hysteresis	0.05 bar
Switching time off	535 ms
On switching time	170 ms
DC operating voltage range	18 V ... 30 V
Reference voltage	10 V
Residual ripple	10 %
Setpoint/actual values	Optionally: Voltage type 0 - 10 V Current type 4–20 mA
Operating medium	Compressed air as per ISO 8573-1:2010 [7:4:4] Inert gas
Certification	RCM compliance mark
CE marking (see declaration of conformity)	As per EU EMC directive
Corrosion resistance class (CRC)	2 - Moderate corrosion stress
LABS (PWIS) conformity	VDMA24364-B2-L
Temperature of medium	0 °C ... 60 °C
Degree of protection	IP65
Ambient temperature	0 °C ... 50 °C
Product weight	2400 g
Electrical connection	8-pin M16x0.75 Plug as per DIN 45326 Round design
Type of mounting	With through-hole

Feature	Value
Pneumatic connection 1	G1/2
Pneumatic connection 2	G1/2
Pneumatic connection 3	G1/2
Note on materials	RoHS-compliant
Housing material	Wrought aluminum alloy
Diaphragm material	NBR