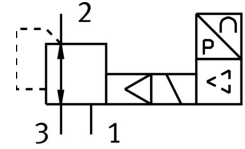


# Proportional pressure control valve MPPE-3-1/4-2,5-010-B

Part number: 164317

FESTO



 General operating condition

## Data sheet

| Feature                                      | Value   |
|--|---|
| Nominal width pressurization                 | 7 mm  |
| Exhaust nominal width                        | 7 mm  |
| Actuation type                               | Electrical  |
| Sealing principle                            | Soft  |
| Mounting position                            | Any   |
| Structural design                            | Pilot-controlled piston control valve   |
| Short-circuit protection                     | For all electrical connections  |
| Safety instructions                          | MPPE-B safety position: if the supply cable breaks, the outlet pressure is maintained in uncontrolled form. |
| Symbol                                       | 00995303  |
| Reverse polarity protection                  | for all electrical connections  |
| Valve function                               | 3-way proportional pressure control valve closed  |
| Operating pressure                           | ≤0.45 MPa   |
| Operating pressure                           | ≤4.5 bar  |
| Pressure regulation range MPa                | 0 MPa ... 0.25 MPa  |
| Pressure regulation range                    | 0 bar ... 2.5 bar   |
| Inlet pressure 1                             | 3.5 bar ... 4.5 bar   |
| Inlet pressure 1 MPa                         | 0.35 MPa ... 0.45 MPa   |
| Max. pressure hysteresis                     | 0.004 MPa   |
| Max. pressure hysteresis                     | 0.04 bar  |
| Switching time off                           | 260 ms  |
| On switching time                            | 150 ms  |
| DC operating voltage range                   | 18 V ... 30 V   |
| Reference voltage                            | 10 V  |
| Residual ripple                              | 10 %  |
| Setpoint/actual values                       | Voltage type 0 - 10 V   |
| Operating medium                             | Compressed air as per ISO 8573-1:2010 [7:4:4]<br>Inert gas  |
| Information on operating and pilot media     | Operation with oil lubrication possible (required for further use)  |
| Certification                                | RCM compliance mark   |
| KC characters                                | KC EMC  |
| CE marking (see declaration of conformity)   | As per EU EMC directive<br>As per EU RoHS directive   |
| UKCA marking (see declaration of conformity) | To UK instructions for EMC<br>To UK RoHS instructions   |
| Corrosion resistance class (CRC)             | 2 - Moderate corrosion stress   |

| Feature                | Value   |
|------------------------|---|
| LABS (PWIS) conformity | VDMA24364-B2-L  |
| Temperature of medium  | 0 °C ... 60 °C  |
| Degree of protection   | IP65  |
| Ambient temperature    | 0 °C ... 50 °C  |
| Product weight         | 920 g   |
| Electrical connection  | 8-pin<br>M16x0.75<br>Plug<br>as per DIN 45326<br>Round design |
| Type of mounting       | With through-hole   |
| Pneumatic connection 1 | G1/4  |
| Pneumatic connection 2 | G1/4  |
| Pneumatic connection 3 | G1/4  |
| Note on materials      | RoHS-compliant  |
| Housing material       | Wrought aluminum alloy  |
| Diaphragm material     | NBR   |