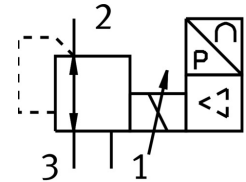



# Proportional pressure control valve MPPE-3-1/8- -B

Part number: 164330

FESTO



 General operating condition

## Data sheet

Feature	Value
Nominal width pressurization	5 mm
Exhaust nominal width	5 mm
Actuation type	Electrical
Sealing principle	Soft
Mounting position	Any
Structural design	Pilot-controlled piston control valve
Safety instructions	MPPE-B safety position: if the supply cable breaks, the outlet pressure is maintained in uncontrolled form.
Symbol	00995305
Operating pressure	0 bar ... 10 bar
Pressure regulation range	0 bar ... 10 bar
Inlet pressure 1	11 bar ... 12 bar
Max. pressure hysteresis	0.05 bar
Switching time off	220 ms
On switching time	140 ms
DC operating voltage range	18 V ... 30 V
Reference voltage	10 V
Residual ripple	10 %
Setpoint/actual values	Optionally: Voltage type 0 - 10 V Current type 4–20 mA
Operating medium	Compressed air as per ISO 8573-1:2010 [7:4:4] Inert gas
Certification	RCM compliance mark
CE marking (see declaration of conformity)	As per EU EMC directive
Corrosion resistance class (CRC)	2 - Moderate corrosion stress
LABS (PWIS) conformity	VDMA24364-B2-L
Temperature of medium	0 °C ... 60 °C
Degree of protection	IP65
Ambient temperature	0 °C ... 50 °C
Product weight	710 g
Electrical connection	8-pin M16x0.75 Plug as per DIN 45326 Round design

<b>Feature</b>	<b>Value</b>
Type of mounting	With through-hole
Pneumatic connection 1	G1/8
Pneumatic connection 2	G1/8
Pneumatic connection 3	G1/8
Note on materials	RoHS-compliant
Housing material	Wrought aluminum alloy
Diaphragm material	NBR