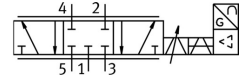


Proportional directional control valve MPYE-5-1/8-LF-420-B

FESTO

Part number: 161978



[PDF General operating condition](#)

Data sheet

| Feature | Value |
|--|---|
| Nominal width | 4 mm |
| Actuation type | Electrical |
| Sealing principle | Hard |
| Mounting position | Any |
| Structural design | Piston gate valve |
| Reset method | Magnetic spring |
| Safety instructions | MPYE safety position: if the power supply cable breaks, the blocked mid-position is approached. |
| Type of control | Direct |
| Flow direction | Non-reversible |
| Symbol | 00995308 |
| Valve function | 5/3, closed |
| Reverse polarity protection | for setpoint value |
| Operating pressure | 0 MPa ... 1 MPa |
| Operating pressure | 0 bar ... 10 bar |
| b-value | 0.12 |
| C value | 1.65 l/sbar |
| Standard nominal flow rate | 350 l/min |
| Cut-off frequency | 95 Hz |
| Max. hysteresis | 0.4 % |
| DC operating voltage range | 17 V ... 30 V |
| Residual ripple | 5 % |
| Setpoint/actual values | Current type 4–20 mA |
| Certification | RCM compliance mark |
| KC characters | KC EMC |
| CE marking (see declaration of conformity) | As per EU EMC directive As per EU RoHS directive |
| UKCA marking (see declaration of conformity) | To UK instructions for EMC To UK RoHS instructions |
| Operating medium | Compressed air as per ISO 8573-1:2010 [6:4:4] |
| Information on operating and pilot media | Operation with oil lubrication not possible |
| Corrosion resistance class (CRC) | 2 - Moderate corrosion stress |
| LABS (PWIS) conformity | VDMA24364-B2-L |
| Temperature of medium | 5 °C ... 40 °C |
| Degree of protection | IP65 |
| Ambient temperature | 0 °C ... 50 °C |

| Feature | Value |
|------------------------|--|
| Product weight | 285 g |
| Electrical connection | 4-pin M12x1 Plug Round design |
| Type of mounting | With through-hole |
| Pneumatic connection 1 | G1/8 |
| Pneumatic connection 2 | G1/8 |
| Pneumatic connection 3 | G1/8 |
| Pneumatic connection 4 | G1/8 |
| Pneumatic connection 5 | G1/8 |
| Note on materials | RoHS-compliant |
| Cover material | ABS Coated |
| Seals material | NBR |
| Housing material | Aluminum Anodized |