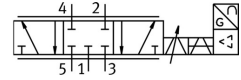


# Proportional directional control valve MPYE-5-M5-010-B

FESTO

Part number: 154200



[PDF General operating condition](#)

## Data sheet

| Feature                                      | Value   |
|--|---|
| Nominal width                                | 2 mm  |
| Actuation type                               | Electrical  |
| Sealing principle                            | Hard  |
| Mounting position                            | Any   |
| Structural design                            | Piston gate valve   |
| Reset method                                 | Magnetic spring   |
| Safety instructions                          | MPYE safety position: if the power supply cable breaks, the blocked mid-position is approached. |
| Type of control                              | Direct  |
| Flow direction                               | Non-reversible  |
| Symbol                                       | 00995308  |
| Valve function                               | 5/3, closed   |
| Reverse polarity protection                  | for all electrical connections  |
| Operating pressure                           | 0 MPa ... 1 MPa   |
| Operating pressure                           | 0 bar ... 10 bar  |
| b-value                                      | 0.21  |
| C value                                      | 0.45 l/sbar   |
| Standard nominal flow rate                   | 100 l/min   |
| Cut-off frequency                            | 115 Hz  |
| Max. hysteresis                              | 0.4 %   |
| DC operating voltage range                   | 17 V ... 30 V   |
| Residual ripple                              | 5 %   |
| Setpoint/actual values                       | Voltage type 0 - 10 V   |
| Certification                                | RCM compliance mark   |
| KC characters                                | KC EMC  |
| CE marking (see declaration of conformity)   | As per EU EMC directive<br>As per EU RoHS directive   |
| UKCA marking (see declaration of conformity) | To UK instructions for EMC<br>To UK RoHS instructions   |
| Operating medium                             | Compressed air as per ISO 8573-1:2010 [6:4:4]   |
| Information on operating and pilot media     | Operation with oil lubrication not possible   |
| Corrosion resistance class (CRC)             | 2 - Moderate corrosion stress   |
| LABS (PWIS) conformity                       | VDMA24364-B2-L  |
| Temperature of medium                        | 5 °C ... 40 °C  |
| Degree of protection                         | IP65  |
| Ambient temperature                          | 0 °C ... 50 °C  |

| <b>Feature</b>         | <b>Value</b>                           |
|------------------------|--|
| Product weight         | 255 g                                  |
| Electrical connection  | 4-pin<br>M12x1<br>Plug<br>Round design |
| Type of mounting       | With through-hole                      |
| Pneumatic connection 1 | M5                                     |
| Pneumatic connection 2 | M5                                     |
| Pneumatic connection 3 | M5                                     |
| Pneumatic connection 4 | M5                                     |
| Pneumatic connection 5 | M5                                     |
| Note on materials      | RoHS-compliant                         |
| Cover material         | ABS<br>Coated                          |
| Seals material         | NBR                                    |
| Housing material       | Aluminum<br>Anodized                   |