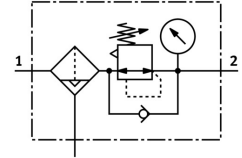


Filter regulator MS12-LFR-G-D7-EUV-LD-AS

Part number: 537149

FESTO



General operating condition

Data sheet

Feature	Value
Size	12
Series	MS
Actuator lock	Rotary knob with detent can be closed with accessories
Mounting position	Vertical +/- 5°
Grade of filtration	40 µm
Condensate drain	Fully automatic Manual, non-detenting
Structural design	Filter regulator with pressure gauge Sinter filter with centrifugal separator with condensate drain with secondary exhausting Modular Pilot-controlled diaphragm regulator
Max. condensate volume	400 ml
Controller function	Outlet pressure constant With primary pressure compensation With secondary exhausting With return flow function
Bowl guard	Integrated as metal bowl guard
Degree of condensate separation	>75 %
Symbol	00991587
Pressure gauge	with pressure gauge
Operating pressure	2 bar ... 12 bar
Pressure regulation range	0.5 bar ... 12 bar
Max. pressure hysteresis	0.4 bar
Flow rate of secondary venting	500 l/min
Standard nominal flow rate	12000 l/min ... 17000 l/min
Operating medium	Compressed air as per ISO 8573-1:2010 [7:4:-] Inert gas
Information on operating and pilot media	Ester oil < 0.1mg/m ³ , according to ISO 8573-1:2010 [-:2]
Corrosion resistance class (CRC)	2 - Moderate corrosion stress
LABS (PWIS) conformity	VDMA24364-B1/B2-L
Storage temperature	-10 °C ... 60 °C
Air quality class at the output	Compressed air as per ISO 8573-1:2010 [7:4:4]
Temperature of medium	5 °C ... 60 °C
Ambient temperature	5 °C ... 60 °C
Pore size	40 µm

Feature	Value
Product weight	7000 g
Type of mounting	Optionally: Line installation With mounting bracket
Pneumatic connection 1	Internal
Pneumatic connection 2	Internal
Covering material	PA
Material of spin disc	POM
Material of filter support	POM
Material of sight glass metal bowl	PC
Material of operator panel	PA-reinforced POM
Seals material	NBR
Material of spring	Spring steel
Compressed air filter material	Sintered bronze
Housing material	Die-cast aluminum
Diaphragm material	NBR
Material of bowl	Wrought aluminum alloy
Separating disc material	POM
Valve tappet material	Wrought aluminum alloy NBR High-alloy stainless steel
Material of stabilizing disc	POM