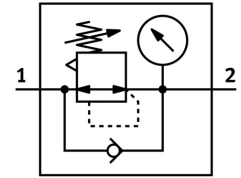



Pressure regulator MS12-LR-G-D7-LD-AS

Part number: 537148

FESTO



 General operating condition

Data sheet

Feature	Value
Size	12
Series	MS
Actuator lock	Rotary knob with detent can be closed with accessories
Mounting position	Any
Structural design	Pilot-controlled diaphragm regulator
Controller function	Outlet pressure constant With primary pressure compensation With secondary exhausting With return flow function
Symbol	00991558
Pressure gauge	with pressure gauge
Operating pressure	0.08 MPa ... 2.1 MPa
Operating pressure	0.8 bar ... 21 bar
Pressure regulation range	0.5 bar ... 12 bar
Max. pressure hysteresis	0.04 MPa
Max. pressure hysteresis	0.4 bar
Max. pressure hysteresis	5.8 psi
Flow rate of secondary venting	≤600 l/min
Standard nominal flow rate	13000 l/min ... 22000 l/min
Operating medium	Compressed air as per ISO 8573-1:2010 [7:4:4] Inert gas
Corrosion resistance class (CRC)	2 - Moderate corrosion stress
LABS (PWIS) conformity	VDMA24364-B1/B2-L
Storage temperature	-10 °C ... 60 °C
Temperature of medium	-10 °C ... 60 °C
Ambient temperature	-10 °C ... 60 °C
Product weight	4000 g
Type of mounting	Optionally: Line installation With mounting bracket
Pneumatic connection 1	Sub-base
Pneumatic connection 2	Sub-base
Covering material	PA
Note on materials	RoHS-compliant

Feature	Value
Material of operator panel	PA-reinforced POM
Lower cover material	Wrought aluminum alloy
Seals material	NBR
Material of spring	Spring steel
Housing material	Die-cast aluminum
Diaphragm material	NBR
Valve tappet material	Wrought aluminum alloy NBR High-alloy stainless steel