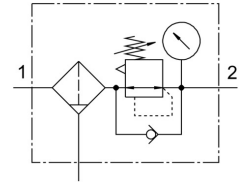



# Compressed air filter regulator MS2-LFR-QS6-D6-C-P-M-AR-BAR-B

Part number: 8086644

FESTO



 General operating condition

## Data sheet

Feature	Value
Size	2
Series	MS
Actuator lock	Rotary knob with detent
Mounting position	Vertical +/- 5°
Grade of filtration	5 µm
Condensate drain	Manually rotating
Structural design	Filter regulator with pressure gauge
Max. condensate volume	3 ml
Controller function	Outlet pressure constant With secondary exhausting With return flow function
Symbol	00991589
Displayable unit(s)	bar psi
Pressure gauge	with pressure gauge
Operating pressure	0.1 MPa ... 0.8 MPa
Operating pressure	1 bar ... 8 bar
Pressure regulation range	0.5 bar ... 7 bar
Max. pressure hysteresis	0.025 MPa
Max. pressure hysteresis	0.25 bar
Max. pressure hysteresis	3.625 psi
Standard nominal flow rate	310 l/min
Operating medium	Compressed air as per ISO 8573-1:2010 [7:4:4] Inert gas
Corrosion resistance class (CRC)	1 - Low corrosion stress
LABS (PWIS) conformity	VDMA24364-B1/B2-L
Cleanroom class	Class 7 according to ISO 14644-1
Storage temperature	-5 °C ... 50 °C
Air quality class at the output	Compressed air as per ISO 8573-1:2010 [6:4:4]
Temperature of medium	-5 °C ... 50 °C
Ambient temperature	-5 °C ... 50 °C
Product weight	43.5 g
Type of mounting	Optionally: Front panel mounting Line installation With accessories

<b>Feature</b>	<b>Value</b>
Pneumatic connection 1	QS-6
Pneumatic connection 2	QS-6
Note on materials	RoHS-compliant
Seals material	NBR
Rotary knob material	POM
Material of spring	High-alloy steel
Compressed air filter material	PE
Housing material	PA-reinforced
Diaphragm material	NBR
Material of bowl	PC
Separating disc material	POM
Valve tappet material	Wrought aluminum alloy NBR