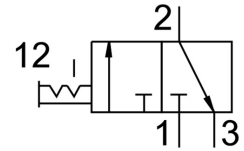


# Shut off valve MS4-EM1-1/4-S-Z

Part number: 541260

FESTO



 General operating condition

## Data sheet

Feature	Value
Structural design	Rotary gate valve
Actuation type	Manual
Exhaust air function	Without flow control option
Type of control	Direct
Symbol	00991670
Valve function	3/2, bistable
Operating pressure	0 bar ... 14 bar
C value	9 l/sbar
b-value	0.39
Standard nominal flow rate	2200 l/min
Operating medium	Compressed air as per ISO 8573-1:2010 [7:4:4] Inert gas
Information on operating and pilot media	Operation with oil lubrication possible (required for further use)
Corrosion resistance class (CRC)	2 - Moderate corrosion stress
Note on materials	RoHS-compliant
LABS (PWIS) conformity	VDMA24364-B1/B2-L
Temperature of medium	-10 °C ... 60 °C
Ambient temperature	-10 °C ... 60 °C
For use in the food industry	See supplementary material information
Type of mounting	Optionally: Line installation With accessories
Mounting position	Any
Flow direction	Non-reversible
Product weight	210 g
Pneumatic connection 1	G1/4
Pneumatic connection 2	G¼
Pneumatic connection 3	Not ducted
Seals material	TPE-U(PU)
Housing material	Die-cast aluminum