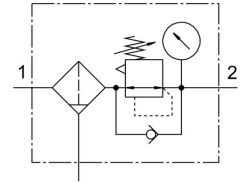


# Filter regulator MS4-LFR-1/4-D6-CRM-AS-Z

Part number: 529145

FESTO



 General operating condition

## Data sheet

| Feature                          | Value  |
|----------------------------------|--|
| Size                             | 4  |
| Series                           | MS   |
| Actuator lock                    | Rotary knob with detent<br>can be closed with accessories                          |
| Mounting position                | Vertical +/- 5°  |
| Grade of filtration              | 5 µm   |
| Condensate drain                 | Manually rotating  |
| Structural design                | Filter regulator with pressure gauge   |
| Max. condensate volume           | 19 ml  |
| Controller function              | Outlet pressure constant<br>With secondary exhausting<br>With return flow function |
| Bowl guard                       | Plastic bowl guard   |
| Degree of condensate separation  | >75 %  |
| Symbol                           | 00991589   |
| Pressure gauge                   | with pressure gauge  |
| Operating pressure               | 0.08 MPa ... 1.4 MPa   |
| Operating pressure               | 0.8 bar ... 14 bar   |
| Pressure regulation range        | 0.3 bar ... 7 bar  |
| Max. pressure hysteresis         | 0.25 bar   |
| Standard nominal flow rate       | 1500 l/min   |
| Operating medium                 | Compressed air as per ISO 8573-1:2010 [-:4:-]<br>Inert gas                         |
| Corrosion resistance class (CRC) | 2 - Moderate corrosion stress  |
| LABS (PWIS) conformity           | VDMA24364-B1/B2-L  |
| Storage temperature              | -10 °C ... 60 °C   |
| For use in the food industry     | See supplementary material information   |
| Air quality class at the output  | Compressed air as per ISO 8573-1:2010 [6:4:4]                                      |
| Temperature of medium            | -10 °C ... 60 °C   |
| Ambient temperature              | -10 °C ... 60 °C   |
| Pore size                        | <5 µm  |
| Product weight                   | 275 g  |
| Type of mounting                 | Optionally:<br>Front panel mounting<br>Line installation<br>With accessories       |

| <b>Feature</b>                 | <b>Value</b>      |
|--------------------------------|-------------------|
| Pneumatic connection 1         | G1/4              |
| Pneumatic connection 2         | G1/4              |
| Note on materials              | RoHS-compliant    |
| Material of sub-base           | Die-cast aluminum |
| Material of operator panel     | PA<br>POM         |
| Seals material                 | NBR               |
| Compressed air filter material | PE                |
| Housing material               | Die-cast aluminum |
| Diaphragm material             | NBR               |
| Material of bowl               | PC                |
| Separating disc material       | POM               |