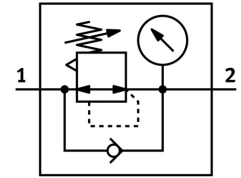


# Pressure regulator MS4-LR-1/8-D6-A8

Part number: 543519

FESTO



 General operating condition

## Data sheet

| Feature                                  | Value  |
|--|--|
| Size                                     | 4  |
| Series                                   | MS   |
| Actuator lock                            | Rotary knob with detent  |
| Mounting position                        | Any  |
| Structural design                        | Directly controlled diaphragm regulator  |
| Controller function                      | Outlet pressure constant<br>With secondary exhausting<br>With return flow function |
| Symbol                                   | 00991558   |
| Pressure gauge                           | G1/8 prepared  |
| Operating pressure                       | 0.08 MPa ... 1.4 MPa   |
| Operating pressure                       | 0.8 bar ... 14 bar   |
| Pressure regulation range                | 0.3 bar ... 7 bar  |
| Max. pressure hysteresis                 | 0.025 MPa  |
| Max. pressure hysteresis                 | 0.25 bar   |
| Max. pressure hysteresis                 | 3.625 psi  |
| Standard nominal flow rate               | 1150 l/min   |
| Operating medium                         | Compressed air as per ISO 8573-1:2010 [7:4:4]<br>Inert gas                         |
| Information on operating and pilot media | Operation with oil lubrication possible (required for further use)                 |
| Corrosion resistance class (CRC)         | 2 - Moderate corrosion stress  |
| LABS (PWIS) conformity                   | VDMA24364-B1/B2-L  |
| Storage temperature                      | -10 °C ... 60 °C   |
| For use in the food industry             | See supplementary material information   |
| Temperature of medium                    | -10 °C ... 60 °C   |
| Ambient temperature                      | -10 °C ... 60 °C   |
| Product weight                           | 225 g  |
| Type of mounting                         | Optionally:<br>Front panel mounting<br>Line installation<br>With accessories       |
| Pneumatic connection 1                   | G1/8   |
| Pneumatic connection 2                   | G1/8   |
| Note on materials                        | RoHS-compliant   |
| Material of sub-base                     | Die-cast aluminum  |

| <b>Feature</b>             | <b>Value</b>      |
|----------------------------|-------------------|
| Material of operator panel | PA<br>POM         |
| Seals material             | NBR               |
| Housing material           | Die-cast aluminum |
| Diaphragm material         | NBR               |