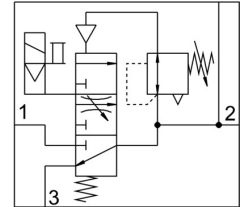



# Soft start valve MS6-EDE-1/2-V24-B

Part number: 8080855

FESTO



 General operating condition

## Data sheet

Feature	Value
Size	6
Width dimension	62 mm
Exhaust air function	Without flow control option
Actuation type	Electrical
Mounting position	Vertical +/- 5°
Series	MS
Manual override	Detenting Non-detenting
Structural design	Poppet valve, electrically actuated
Reset method	Mechanical spring
Type of control	Pilot-controlled
Pilot air supply port	Internal
Symbol	00993648
Valve function	3/2, closed, monostable
Lap	Underlap
Switching position indication	with accessories
Operating pressure	0.3 MPa ... 0.7 MPa
Operating pressure	3 bar ... 7 bar
Standard nominal flow rate	5000 l/min
On time	31 ms
Coil characteristics	24 V DC: 2.3 W
Permissible voltage fluctuations	+/- 10 %
Operating medium	Compressed air as per ISO 8573-1:2010 [7:4:4]
Corrosion resistance class (CRC)	1 - Low corrosion stress
LABS (PWIS) conformity	VDMA24364-B1/B2-L
Cleanroom class	Class 7 according to ISO 14644-1
Storage temperature	-10 °C ... 60 °C
Temperature of medium	-5 °C ... 50 °C
Degree of protection	IP65
Ambient temperature	-5 °C ... 50 °C
Product weight	517 g
Electrical connection	Form C as per EN 175301-803
Signal status display	With accessories

<b>Feature</b>	<b>Value</b>
Type of mounting	With wall/surface bracket
Pneumatic connection 1	G1/2
Pneumatic connection 2	G1/2
Pneumatic connection 3	G1/2
Note on materials	RoHS-compliant
Seals material	HNBR NBR
Housing material	PA-reinforced