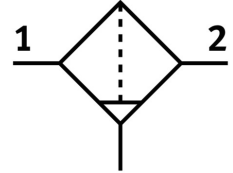



# Compressed air filter MS6-LF-1/4-CRM

Part number: 529623

FESTO



 General operating condition

## Data sheet

| Feature                          | Value  |
|----------------------------------|--|
| Size                             | 6  |
| Series                           | MS   |
| Mounting position                | Vertical +/- 5°  |
| Grade of filtration              | 5 µm   |
| Condensate drain                 | Manually rotating  |
| Structural design                | Sinter filter with centrifugal separator                   |
| Bowl guard                       | Plastic bowl guard   |
| Degree of condensate separation  | >75 %  |
| Symbol                           | 00991519   |
| Operating pressure               | 0 bar ... 20 bar   |
| Standard nominal flow rate       | 2000 l/min   |
| Operating medium                 | Compressed air as per ISO 8573-1:2010 [-:9:-]<br>Inert gas |
| Corrosion resistance class (CRC) | 2 - Moderate corrosion stress                              |
| LABS (PWIS) conformity           | VDMA24364-B1/B2-L  |
| Storage temperature              | -10 °C ... 60 °C   |
| For use in the food industry     | See supplementary material information                     |
| Air quality class at the output  | Compressed air as per ISO 8573-1:2010 [6:8:4]              |
| Temperature of medium            | -10 °C ... 60 °C   |
| Ambient temperature              | -10 °C ... 60 °C   |
| Pore size                        | <5 µm  |
| Product weight                   | 600 g  |
| Type of mounting                 | Optionally:<br>Line installation<br>With accessories       |
| Pneumatic connection 1           | G1/4   |
| Pneumatic connection 2           | G¼   |
| Note on materials                | RoHS-compliant   |
| Seals material                   | NBR  |
| Compressed air filter material   | PE   |
| Housing material                 | Die-cast aluminum  |
| Material of bowl                 | PC   |
| Separating disc material         | POM  |