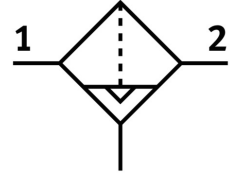


Compressed air filter MS6-LF-3/8-ERV

Part number: 529649

FESTO



 General operating condition

Data sheet

Feature	Value
Size	6
Series	MS
Mounting position	Vertical +/- 5°
Grade of filtration	40 µm
Condensate drain	Fully automatic Manual, non-detenting
Structural design	Sinter filter with centrifugal separator
Bowl guard	Plastic bowl guard
Degree of condensate separation	>75 %
Symbol	00991520
Operating pressure	2 bar ... 12 bar
Standard nominal flow rate	3800 l/min
Operating medium	Compressed air as per ISO 8573-1:2010 [7:9:-] Inert gas
Corrosion resistance class (CRC)	2 - Moderate corrosion stress
LABS (PWIS) conformity	VDMA24364-B1/B2-L
Storage temperature	-10 °C ... 60 °C
For use in the food industry	See supplementary material information
Air quality class at the output	Compressed air as per ISO 8573-1:2010 [7:8:4]
Temperature of medium	-10 °C ... 60 °C
Ambient temperature	-10 °C ... 60 °C
Pore size	<40 µm
Product weight	600 g
Type of mounting	Optionally: Line installation With accessories
Pneumatic connection 1	G3/8
Pneumatic connection 2	G3/8
Note on materials	RoHS-compliant
Seals material	NBR
Compressed air filter material	PE
Housing material	Die-cast aluminum
Material of bowl	PC
Separating disc material	POM