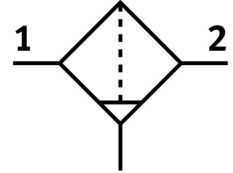


Active carbon filter MS6-LFX-1/2-R-Z

Part number: 529680

FESTO



 General operating condition

Data sheet

Feature	Value
Size	6
Series	MS
Mounting position	Vertical +/- 5°
Structural design	Active carbon filter
Bowl guard	Plastic bowl guard
Symbol	00991519
Operating pressure	0 bar ... 20 bar
Max. standard flow rate for air quality class	900 l/min
Operating medium	Compressed air as per ISO 8573-1:2010 [1:4:2] Inert gas
Corrosion resistance class (CRC)	2 - Moderate corrosion stress
LABS (PWIS) conformity	VDMA24364-B1/B2-L
Storage temperature	-10 °C ... 60 °C
For use in the food industry	See supplementary material information
Air quality class at the output	Compressed air as per ISO 8573-1:2010 [1:4:1]
Temperature of medium	5 °C ... 30 °C
Residual oil content	0.003 mg/m ³
Ambient temperature	-10 °C ... 60 °C
Product weight	600 g
Type of mounting	Optionally: Line installation With accessories
Pneumatic connection 1	G1/2
Pneumatic connection 2	G1/2
Note on materials	RoHS-compliant
Compressed air filter material	Activated carbon
Housing material	Die-cast aluminum
Material of bowl	PC