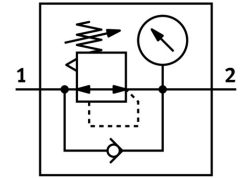


Pressure regulator MS6-LR-1/2-D6-AG-MPA-B

Part number: 8099204

FESTO



 General operating condition

Data sheet

Feature	Value
Size	6
Series	MS
Actuator lock	Rotary knob with detent
Mounting position	Any
Structural design	Pressure regulator with pressure gauge Directly controlled piston regulator
Controller function	Outlet pressure constant With secondary exhausting With return flow function
Symbol	00991558
Displayable unit(s)	MPa
Pressure gauge	with pressure gauge
Operating pressure	0.1 MPa ... 1 MPa
Operating pressure	1 bar ... 10 bar
Pressure regulation range	0.3 bar ... 7 bar
Max. pressure hysteresis	0.035 MPa
Max. pressure hysteresis	0.35 bar
Max. pressure hysteresis	5.075 psi
Standard nominal flow rate	6000 l/min
Operating medium	Compressed air as per ISO 8573-1:2010 [7:4:4] Inert gas
Information on operating and pilot media	Operation with oil lubrication possible (required for further use)
Corrosion resistance class (CRC)	1 - Low corrosion stress
LABS (PWIS) conformity	VDMA24364-B1/B2-L
Cleanroom class	Class 7 according to ISO 14644-1
Storage temperature	-5 °C ... 50 °C
Temperature of medium	-5 °C ... 50 °C
Ambient temperature	-5 °C ... 50 °C
Product weight	482 g
Type of mounting	Optionally: Front panel mounting Line installation With accessories
Pneumatic connection 1	G1/2
Pneumatic connection 2	G1/2
Note on materials	RoHS-compliant

Feature	Value
Lower cover material	PA
Seals material	NBR
Rotary knob material	POM
Material of spring	High-alloy steel Steel, galvanized
Housing material	PA-reinforced
Valve tappet material	POM