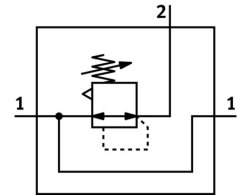
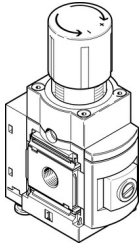



# Precision pressure regulator MS6-LRPB-1/2-D2-A8-BD

Part number: 534865

FESTO



 [General operating condition](#)

## Data sheet

Feature	Value
Size	6
Series	MS
Actuator lock	Rotary knob with detent
Mounting position	Any
Structural design	Pilot-controlled precision diaphragm regulator
Controller function	Outlet pressure constant With secondary exhausting
Symbol	00991973
Pressure gauge	G1/8 prepared
Operating pressure	0.1 MPa ... 1.4 MPa
Operating pressure	1 bar ... 14 bar
Pressure regulation range	0.05 bar ... 0.7 bar
Max. pressure hysteresis	0.02 bar
Flow rate of secondary venting	≥220 l/min
Standard nominal flow rate	≥1600 l/min
Operating medium	Compressed air as per ISO 8573-1:2010 [7:4:4] Inert gas
Information on operating and pilot media	Operation with oil lubrication not possible
Corrosion resistance class (CRC)	2 - Moderate corrosion stress
LABS (PWIS) conformity	VDMA24364-B1/B2-L
Storage temperature	-10 °C ... 60 °C
Temperature of medium	-10 °C ... 60 °C
Ambient temperature	-10 °C ... 60 °C
Product weight	850 g
Type of mounting	Optionally: Front panel mounting Line installation With accessories
Pneumatic connection 1	G1/2
Pneumatic connection 2	G1/2
Pneumatic connection 3	G1/4
Note on materials	RoHS-compliant
Seals material	NBR
Housing material	Aluminum