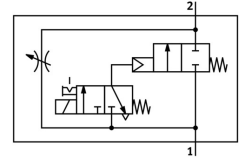



# Soft start valve MS6N-DE-3/8-10V24

Part number: 542574

FESTO



 General operating condition

## Data sheet

Feature	Value
Actuation type	Electrical
Mounting position	Any
Manual override	Detenting Non-detenting
Structural design	Piston seat
Reset method	Mechanical spring
Type of control	Pilot-controlled
Pilot air supply port	Internal
Flow direction	Non-reversible
Symbol	00991501
Valve function	2/2
Switching position indication	with accessories
Operating pressure	4 bar ... 10 bar
b-value	0.48
C value	21.05 l/sbar
Standard nominal flow rate	5050 l/min
Duty cycle	100%
Coil characteristics	24 V DC: 1.8 W
Certification	c UL - Recognized (OL)
Operating medium	Compressed air as per ISO 8573-1:2010 [7:4:4] Inert gas
Information on operating and pilot media	Operation with oil lubrication possible (required for further use)
Corrosion resistance class (CRC)	2 - Moderate corrosion stress
LABS (PWIS) conformity	VDMA24364-B1/B2-L
For use in the food industry	See supplementary material information
Temperature of medium	-10 °C ... 50 °C
Degree of protection	IP65
Ambient temperature	-10 °C ... 50 °C
Product weight	680 g
Electrical connection	Form C Plug as per DIN EN 175301-803 Rectangular design
Signal status display	With accessories
Type of mounting	Optionally: Line installation With accessories

<b>Feature</b>	<b>Value</b>
Pneumatic connection 1	3/8 NPT
Pneumatic connection 2	3/8 NPT
Note on materials	RoHS-compliant
Seals material	NBR
Housing material	Die-cast aluminum