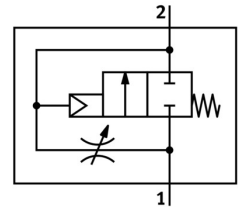


Soft start valve MS6N-DL-1/4

Part number: 532023

FESTO



General operating condition

Data sheet

Feature	Value
Exhaust air function	With flow control option
Actuation type	Pneumatic
Mounting position	Any
Manual override	None
Structural design	Piston seat
Reset method	Mechanical spring
Type of control	Direct
Pilot air supply port	External
Flow direction	Non-reversible
Symbol	00991513
Valve function	2/2
Operating pressure	4 bar ... 18 bar
b-value	0.54
C value	11.22 l/sbar
Standard nominal flow rate	2800 l/min
Operating medium	Compressed air as per ISO 8573-1:2010 [7:4:4] Inert gas
Information on operating and pilot media	Operation with oil lubrication possible (required for further use)
Corrosion resistance class (CRC)	2 - Moderate corrosion stress
LABS (PWIS) conformity	VDMA24364-B2-L
For use in the food industry	See supplementary material information
Temperature of medium	-10 °C ... 60 °C
Ambient temperature	-10 °C ... 60 °C
Product weight	650 g
Type of mounting	Optionally: Line installation With accessories
Pneumatic connection 1	1/4 NPT
Pneumatic connection 2	1/4 NPT
Note on materials	RoHS-compliant
Seals material	NBR
Housing material	Die-cast aluminum