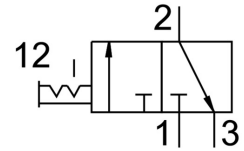



# Shut off valve MS9-EM-G-S-VS

Part number: 562952

FESTO



 General operating condition

## Data sheet

Feature	Value
Series	MS
Size	9
Width dimension	90 mm
Structural design	Piston gate valve
Actuation type	Manual
Sealing principle	Soft
Exhaust air function	Without flow control option
Actuator lock	Rotary knob with detent
Reset method	Forced guidance
Type of control	Direct
Symbol	00991670
Valve function	3/2, bistable
Operating pressure	0 bar ... 20 bar
Lap	Overlap
Standard nominal flow rate	18000 l/min
Standard nominal flow rate 2-3	14100 l/min
Operating medium	Compressed air as per ISO 8573-1:2010 [7:4:4]
Information on operating and pilot media	Operation with oil lubrication possible (required for further use)
Corrosion resistance class (CRC)	2 - Moderate corrosion stress
Note on materials	RoHS-compliant
LABS (PWIS) conformity	VDMA24364-B1/B2-L
Temperature of medium	-10 °C ... 60 °C
Noise level	93 dB(A)
Ambient temperature	-10 °C ... 60 °C
Type of mounting	Optionally: Line installation With accessories
Mounting position	Any
Product weight	2400 g
Pneumatic connection 3	G1
Piston slide material	POM
Seals material	NBR
Housing material	Die-cast aluminum