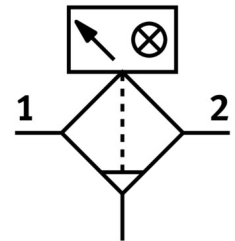


# Fine filter MS9-LFM-G-BUM-HF-DA

Part number: 564044

FESTO



 General operating condition

## Data sheet

| Feature                                       | Value  |
|---|--|
| Series  | MS   |
| Size  | 9  |
| Structural design                             | Fiber filter   |
| Grade of filtration                           | 1 µm   |
| Condensate drain                              | Manually rotating                                    |
| Symbol  | 00991543   |
| Operating pressure                            | 0 bar ... 20 bar                                     |
| Operating medium                              | Compressed air as per ISO 8573-1:2010 [6:4:4]        |
| Air quality class at the output               | Compressed air as per ISO 8573-1:2010 [5:4:3]        |
| Max. standard flow rate for air quality class | 10000 l/min  |
| Min. standard flow rate for air quality class | 500 l/min  |
| Filter efficiency                             | 99.99 %  |
| Max. condensate volume                        | 225 ml   |
| Corrosion resistance class (CRC)              | 2 - Moderate corrosion stress                        |
| LABS (PWIS) conformity                        | VDMA24364-B1/B2-L                                    |
| Temperature of medium                         | -10 °C ... 60 °C                                     |
| Ambient temperature                           | -10 °C ... 60 °C                                     |
| Storage temperature                           | -10 °C ... 60 °C                                     |
| Filter efficiency, fine particles             | 99 %   |
| Residual oil content                          | 0.5 mg/m <sup>3</sup>                                |
| Filter efficiency, oil aerosol                | 90 %   |
| Differential pressure display                 | Visual display                                       |
| Explosive ambient temperature                 | -10°C ≤ Ta ≤ +60°C                                   |
| Type of mounting                              | Optionally:<br>Line installation<br>With accessories |
| Mounting position                             | Vertical +/- 5°                                      |
| Pneumatic connection 1                        | Battery module                                       |
| Pneumatic connection 2                        | Battery module                                       |
| Housing material                              | Die-cast aluminum                                    |
| Covering material                             | PA   |
| Compressed air filter material                | Borosilicate fiber                                   |
| Material of bowl                              | Wrought aluminum alloy                               |

| <b>Feature</b>             | <b>Value</b> |
|----------------------------|--------------|
| Inspection window material | PA           |
| Seals material             | NBR          |
| Product weight             | 2500 g       |