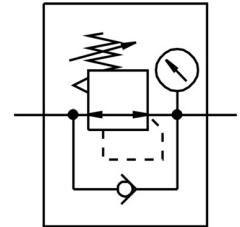


# Pressure regulator MS9-LR-G-D7-AG-BAR-AS

Part number: 564138

FESTO



 [General operating condition](#)

## Data sheet

| Feature                                  | Value  |
|--|--|
| Size                                     | 9  |
| Series                                   | MS   |
| Actuator lock                            | can be closed with accessories   |
| Mounting position                        | Any  |
| Structural design                        | Pilot-controlled diaphragm regulator   |
| Controller function                      | Outlet pressure constant<br>With primary pressure compensation<br>With secondary exhausting<br>With return flow function |
| Symbol                                   | 00991536   |
| Pressure gauge                           | with pressure gauge  |
| Operating pressure                       | 1 bar ... 20 bar   |
| Pressure regulation range                | 0.5 bar ... 12 bar   |
| Max. pressure hysteresis                 | 0.4 bar  |
| Operating medium                         | Compressed air as per ISO 8573-1:2010 [7:4:4]<br>Inert gas   |
| Information on operating and pilot media | Operation with oil lubrication possible (required for further use)   |
| Corrosion resistance class (CRC)         | 2 - Moderate corrosion stress  |
| LABS (PWIS) conformity                   | VDMA24364-B1/B2-L  |
| Storage temperature                      | -10 °C ... 60 °C   |
| Temperature of medium                    | -10 °C ... 60 °C   |
| Ambient temperature                      | -10 °C ... 60 °C   |
| Product weight                           | 1400 g   |
| Type of mounting                         | Optionally:<br>Front panel mounting<br>Line installation<br>With accessories   |
| Covering material                        | PA-reinforced  |
| Note on materials                        | RoHS-compliant   |
| Material of sub-base                     | Die-cast aluminum  |
| Material of mounting bracket             | Die-cast aluminum  |
| Housing material                         | Die-cast aluminum  |
| Module connector material                | Die-cast aluminum  |
| Diaphragm material                       | NBR  |

| Feature               | Value                                |
|-----------------------|--------------------------------------|
| Valve tappet material | Wrought aluminum alloy<br>NBR<br>POM |