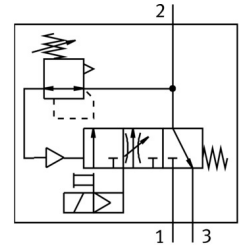



Soft start/quick exhaust valve MS9-SV-G-C-V24-S-VS

Part number: 570737

FESTO



 General operating condition

Data sheet

Feature	Value
Series	MS
Size	9
Width dimension	90 mm
Safety function	Exhausting
Performance Level (PL)	Exhaust/up to category 1, performance level c
Structural design	Piston gate valve
Actuation type	Electrical
Sealing principle	Soft
Exhaust air function	Without flow control option
Manual override	None
Reset method	Mechanical spring
Type of control	Pilot-controlled
Symbol	00995240
Valve function	3/2, closed, monostable Pressure build-up function
Operating pressure	0.35 MPa ... 1.6 MPa
Operating pressure	3.5 bar ... 16 bar
Standard nominal flow rate	8300 l/min ... 16550 l/min
Standard flow rate exhaust 6→0 bar	19730 l/min ... 21720 l/min
Duty cycle	100%
Coil characteristics	24 V DC: 8.4 W
Nominal operating voltage DC	24 V
Permissible voltage fluctuations	+/- 10 %
Operating medium	Compressed air as per ISO 8573-1:2010 [7:4:4]
Information on operating and pilot media	Operation with oil lubrication possible (required for further use)
Corrosion resistance class (CRC)	2 - Moderate corrosion stress
Note on materials	RoHS-compliant
LABS (PWIS) conformity	VDMA24364-B1/B2-L
Noise level	93 dB(A)
Degree of protection	IP65
Temperature of medium	0 °C ... 60 °C
Ambient temperature	0 °C ... 60 °C
Storage temperature	0 °C ... 60 °C

Feature	Value
Shock resistance	Shock test with severity level 1 as per FN 942017-5 and EN 60068-2-27
Vibration resistance	Transport application test with severity level 1 as per FN 942017-4 and EN 60068-2-6
CE marking (see declaration of conformity)	As per EU EMC directive as per EU machinery directive As per EU RoHS directive
UKCA marking (see declaration of conformity)	To UK instructions for EMC To UK instructions for machines To UK RoHS instructions
Type of mounting	Optionally: Line installation With accessories
Mounting position	Any
Product weight	3200 g
Pressure gauge connection	G1/8 G1/4
Pneumatic connection 3	G1 1 NPT
Electrical connection	Form A Plug as per EN 175301-803 Rectangular design
Housing material	Die-cast aluminum
Seals material	NBR
Piston slide material	Brass
Cover material	Wrought aluminum alloy
Lower cover material	PA