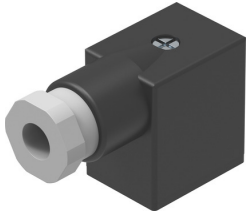


Plug socket MSSD-F-M16

Part number: 539710

FESTO



 [General operating condition](#)

Data sheet

Feature	Value
Contact durability	50
Cable outlet	Angled
Note on cable outlet	Can be rotated through 180°
Product weight	35 g
Electrical connection 1, design	Rectangular
Electrical connection 1, connection type	Socket
Electrical connection 1, connection technology	Connection diagram form B as per industrial standard, 11 mm
Electrical connection 1, number of pins/wires	3
Electrical connection 1, type of mounting	On air solenoid valve with M3 central screw
Electrical connection for input 1, connection pattern	00995619
Electrical connection 2, connection technology	Screw terminal
DC operating voltage range	0 V ... 250 V
Operating voltage range AC	0 V ... 250 V
Current rating at 40° C	6 A
Surge resistance	2 kV
Protective earth connection	Available
Cable fitting	M16x1.5
Cable diameter	6 mm ... 8 mm
Nominal conductor cross section	≤0.75 mm ²
Degree of protection	IP65
Note on degree of protection	In mounted state
Ambient temperature	-20 °C ... 115 °C
LABS (PWIS) conformity	VDMA24364-B2-L
Note on materials	RoHS-compliant
Contamination level	3
Corrosion resistance class (CRC)	1 - Low corrosion stress
Housing material	PA-reinforced
Housing colour	Black
Seals material	HNBR