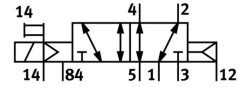
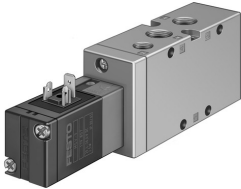


Air solenoid valve MVH-5-1/4-L-S-B

Part number: 33184

FESTO



[PDF General operating condition](#)

Data sheet

| Feature | Value |
|--|--|
| Valve function | 5/2, monostable |
| Actuation type | Electrical |
| Width | 32 mm |
| Standard nominal flow rate | 1600 l/min |
| Pneumatic working port | G1/4 |
| Operating pressure | -0.09 MPa ... 1 MPa |
| Operating pressure | -0.9 bar ... 10 bar |
| Structural design | Piston gate valve |
| Reset method | Pneumatic spring |
| Nominal width | 10 mm |
| Width dimension | 33 mm |
| Exhaust air function | With flow control option |
| Sealing principle | Soft |
| Mounting position | Any |
| Manual override | Non-detenting |
| Type of control | Pilot-controlled |
| Pilot air supply port | External |
| Flow direction | Reversible |
| Symbol | 00991026 |
| Lap | Overlap |
| Pilot pressure MPa | 0.3 MPa ... 1 MPa |
| Pilot pressure | 3 bar ... 10 bar |
| b-value | 0.38 |
| C value | 6.35 l/sbar |
| Max. switching frequency | 3 Hz |
| Switching time off | 37 ms |
| On switching time | 28 ms |
| Max. positive test pulse with 0 signal | 2200 µs |
| Max. negative test pulse on 1 signal | 3700 µs |
| Coil characteristics | 24 V DC: 2.5 W |
| Permissible voltage fluctuations | +/- 10 % |
| Operating medium | Compressed air as per ISO 8573-1:2010 [7:4:4] |
| Information on operating and pilot media | Operation with oil lubrication possible (required for further use) |
| Corrosion resistance class (CRC) | 1 - Low corrosion stress |
| LABS (PWIS) conformity | VDMA24364-B1/B2-L |
| Storage temperature | -40 °C ... 60 °C |

| Feature | Value |
|-----------------------------|--|
| Temperature of medium | -5 °C ... 50 °C |
| Pilot medium | Compressed air as per ISO 8573-1:2010 [7:4:4] |
| Ambient temperature | -5 °C ... 50 °C |
| Product weight | 440 g |
| Type of mounting | Optionally: On PR rail With through-hole |
| Auxiliary pilot air port 12 | G1/8 |
| Auxiliary pilot air port 14 | G1/8 |
| Pilot exhaust air port 84 | M5 |
| Pilot air port 12 | G1/8 |
| Pilot air port 14 | G1/8 |
| Pneumatic connection 1 | G1/4 |
| Pneumatic connection 2 | G1/4 |
| Pneumatic connection 3 | G1/4 |
| Pneumatic connection 4 | G1/4 |
| Pneumatic connection 5 | G1/4 |
| Note on materials | RoHS-compliant |
| Seals material | NBR |
| Housing material | Die-cast aluminum |