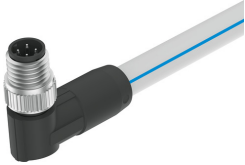


# Connecting cable NEBC-D8W4-ES-15-N-S-D8W4-ET

Part number: 8065136

FESTO



 General operating condition

## Data sheet

| Feature   | Value                                   |
|---|---|
| Based on norm   | EN 61076-2-114                          |
| Certification   | c UL us (OL)                            |
| Certificate issuing authority                         | UL E474609                              |
| Cable designation                                     | Without label holder                    |
| Contact durability                                    | 100                                     |
| Product weight  | 875 g                                   |
| Electrical connection 1, function                     | Control side                            |
| Electrical connection 1, design                       | Round                                   |
| Electrical connection 1, connection type              | Plug                                    |
| Electrical connection 1, cable outlet                 | Angled                                  |
| Electrical connection 1, connection technology        | M8x1, D-coded as per EN 61076-2-114     |
| Electrical connection 1, number of pins/wires         | 4                                       |
| Electrical connection 1, occupied pins/wires          | 4                                       |
| Electrical connection 1, type of mounting             | Screw-type lock with longitudinal knurl |
| Electrical connection for input 1, connection pattern | 00995938                                |
| Electrical connection 2, function                     | Control side                            |
| Electrical connection 2, design                       | Round                                   |
| Electrical connection 2, connection type              | Plug                                    |
| Electrical connection 2, cable outlet                 | Angled                                  |
| Electrical connection 2, connection technology        | M8x1, D-coded as per EN 61076-2-114     |
| Electrical connection 2, number of pins/wires         | 4                                       |
| Electrical connection 2, occupied pins/wires          | 4                                       |
| Electrical connection 2, type of mounting             | Screw-type lock with longitudinal knurl |
| Electrical connection 2, connection pattern           | 00995938                                |
| DC operating voltage range                            | 0 V ... 30 V                            |
| Nominal operating voltage DC                          | 24 V                                    |
| Current rating at 40° C                               | 3 A                                     |
| Surge resistance                                      | 1.5 kV                                  |
| Reverse polarity protection                           | no                                      |
| Protective earth connection                           | Not available                           |
| Shield  | yes                                     |
| Transmission characteristics                          | as per system communication AP          |
| Cable length  | 15 m                                    |
| Cable characteristic                                  | Suitable for energy chains              |
| Connector cable test conditions                       | Test conditions on request              |
| Bending radius, fixed cable installation              | ≥20 mm                                  |

| Feature  | Value                            |
|--|----------------------------------|
| Bending radius, flexible cable installation          | ≥75 mm                           |
| Cable diameter                                       | 6.3 mm                           |
| Cable diameter tolerance                             | ± 0.2 mm                         |
| Cable design   | 1 x (4 x AWG22)                  |
| Nominal conductor cross section                      | AWG22                            |
| Degree of protection                                 | IP65<br>IP67                     |
| Note on degree of protection                         | In mounted state                 |
| Special features                                     | Oil-resistant                    |
| Ambient temperature                                  | -20 °C ... 60 °C                 |
| Ambient temperature with flexible cable installation | -5 °C ... 60 °C                  |
| Storage temperature                                  | -40 °C ... 70 °C                 |
| CE marking (see declaration of conformity)           | As per EU RoHS directive         |
| UKCA marking (see declaration of conformity)         | To UK RoHS instructions          |
| LABS (PWIS) conformity                               | VDMA24364-B2-L                   |
| Note on materials                                    | RoHS-compliant<br>Halogen-free   |
| Contamination level                                  | 3                                |
| Corrosion resistance class (CRC)                     | 2 - Moderate corrosion stress    |
| Material of cable sheath                             | TPE-U(PUR)                       |
| Color cable sheath                                   | Silver-grey with sky blue stripe |
| Housing material                                     | PA<br>TPE-U(PUR)                 |
| Housing colour                                       | Black                            |
| Material of screw-type lock                          | Brass, nickel-plated             |
| Seals material                                       | NBR                              |
| Material of pin contacts                             | Copper alloy, gold-plated        |
| Insulating sheath material                           | PP                               |