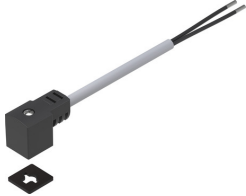


Connecting cable NEBV-C1SW2L-P-K-2.5-N-LE2-S9

Part number: 8032623

FESTO



 General operating condition

Data sheet

Feature	Value
Signal status display	LED yellow
Additional functions	Protective circuit
Cable designation	Without label holder
Contact durability	50
Product weight	120 g
Electrical connection 1, function	Field device end
Electrical connection 1, design	Rectangular
Electrical connection 1, connection type	Socket, narrow
Electrical connection 1, cable outlet	Angled
Electrical connection 1, information on cable outlet	Can be rotated through 180°
Electrical connection 1, connection technology	Connection diagram type C as per EN 175301-803
Electrical connection 1, number of pins/wires	4
Electrical connection 1, occupied pins/wires	2
Electrical connection 1, type of mounting	On air solenoid valve with M2.5 central screw
Electrical connection for input 1, connection pattern	00995797
Electrical connection 2, function	Control side
Electrical connection 2, connection type	Cable
Electrical connection 2, connection technology	Open end
Electrical connection 2, number of pins/wires	2
Electrical connection 2, occupied pins/wires	2
DC operating voltage range	20.4 V ... 26.4 V
Nominal operating voltage DC	24 V
Current rating at 40° C	6 A
Surge resistance	2.4 kV
Reverse polarity protection	Bipolar
Protective earth connection	Not available
Cable length	2.5 m
Cable characteristic	Standard
Connector cable test conditions	Test conditions on request
Bending radius, flexible cable installation	≥52 mm
Cable diameter	5.2 mm
Cable diameter tolerance	± 0.1 mm
Cable design	2 x 0.75 mm ²
Nominal conductor cross section	0.75 mm ²
Degree of protection	IP65 IP67

Feature	Value
Note on degree of protection	In mounted state
Ambient temperature	-20 °C ... 70 °C
Ambient temperature with flexible cable installation	-5 °C ... 70 °C
CE marking (see declaration of conformity)	As per EU RoHS directive
UKCA marking (see declaration of conformity)	To UK RoHS instructions
LABS (PWIS) conformity	VDMA24364-B2-L
Note on materials	RoHS-compliant
Contamination level	3
Corrosion resistance class (CRC)	3 - High corrosion stress
Material of cable sheath	PVC
Color cable sheath	Gray
Housing material	TPE-U(PU)
Housing colour	Black
Material of screws	Stainless steel
Seals material	HNBR
Material of pin contacts	Copper alloy, tin-plated
Insulating sheath material	PVC