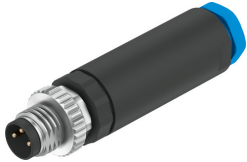


Plug NECB-S-M8G3-C2

Part number: 8162298

FESTO



 General operating condition

Data sheet

Feature	Value
Conforms to standard	EN 61076-2-104
Certification	c UL us - Listed (OL)
Certificate issuing authority	UL E474609
Contact durability	100
Cable outlet	Straight
Product weight	5 g
Application note	Only energy-limited circuits with a maximum current of 4 A at a max. open circuit voltage of 30 VDC are permitted to be used for supplying electrically actuated valves from Festo.
Electrical connection 1, function	Control side
Electrical connection 1, design	Round
Electrical connection 1, connection type	Plug
Electrical connection 1, connection technology	M8x1 A-coded as per EN 61076-2-104
Electrical connection 1, number of pins/wires	3
Electrical connection 1, occupied pins/wires	3
Electrical connection 1, type of mounting	Screw-type lock with hexagon AF 9 and longitudinal knurl rotatable
Electrical connection 1, type of mounting	Compatible with rotatable/non-rotatable screw lock
Electrical connection for input 1, connection pattern	00991155
Electrical connection 2, function	Field device end
Electrical connection 2, connection type	Cable
Electrical connection 2, connection technology	Screw terminal
Electrical connection 2, number of pins/wires	3
Electrical connection 2, occupied pins/wires	3
DC operating voltage range	0 V ... 60 V
Operating voltage range AC	0 V ... 48 V
Current rating at 40° C	4 A
Surge resistance	1.5 kV
Protective earth connection	Not available
Cable fitting	3/8-24 UNF-2A
Cable diameter	2.1 mm ... 5 mm
Connection cross section	0.14 mm ² ... 0.75 mm ²
Information on port cross section	0.1 mm ² with wire end sleeve
Degree of protection	IP65 IP67
Note on degree of protection	In mounted state
Ambient temperature	-25 °C ... 90 °C

Feature	Value
Note on ambient temperature	Note derating
LABS (PWIS) conformity	VDMA24364-B2-L
Note on materials	RoHS-compliant
Contamination level	3
Corrosion resistance class (CRC)	1 - Low corrosion stress
Housing material	PA66-GF30
Housing colour	Black
Material of screw-type lock	Die-cast zinc, nickel-plated
Material of screws	Steel, nickel-plated
Seals material	FPM
Material of pin contacts	Brass, nickel-plated and gold-plated