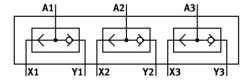
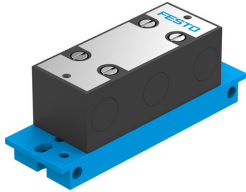


# OR block OS-PK-3-6/3

Part number: 4232

FESTO



General operating condition

## Data sheet

Feature	Value
Valve function	OR function
Pneumatic connection 1	PK-3
Pneumatic connection 2	PK-3
Type of mounting	Front panel mounting
Standard nominal flow rate	100 l/min
Operating pressure	1.6 bar ... 8 bar
Ambient temperature	-10 °C ... 60 °C
Housing material	POM
Operating medium	Compressed air as per ISO 8573-1:2010 [7:-:-]
Explosion prevention and protection	Observe the information on the certificate Zone 1 (ATEX) Zone 2 (ATEX) Zone 21 (ATEX) Zone 22 (ATEX)
Nominal width	2.5 mm
Mounting position	Any
Symbol	00991457
Information on operating and pilot media	Operation with oil lubrication possible (required for further use)
LABS (PWIS) conformity	VDMA24364-B1/B2-L
Temperature of medium	-10 °C ... 60 °C
Product weight	90 g
Pneumatic connection 3	PK-3
Seals material	NBR