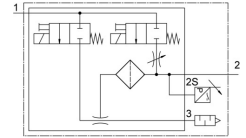
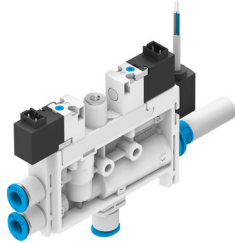


Vacuum generator OVEL-10-H-15-PQ-VQ6-UA-C-A-V1B-H3

Part number: 8049048

FESTO



[PDF](#) General operating condition

Data sheet

| Feature | Value |
|--|---|
| Nominal width of Laval nozzle | 0.95 mm |
| Width dimension | 15 mm |
| Muffler construction type | Open |
| Mounting position | Any |
| Ejector characteristics | High vacuum Standard |
| Grade of filtration | 40 µm |
| Manual override | Non-detenting |
| Integrated function | Electric ejector pulse Flow control Pressure transmitter Shut off valve, electric Compressed air filter Pneumatic muffler open |
| Structural design | T-shape |
| Symbol | 00995804 |
| Valve function | Closed |
| Method of measurement | Piezoresistive pressure sensor |
| Operating pressure for max. suction rate | 0.4 MPa |
| Operating pressure for max. suction rate | 4 bar |
| Operating pressure for max. suction rate | 58 psi |
| Operating pressure | 0.2 MPa ... 0.7 MPa |
| Operating pressure | 2 bar ... 7 bar |
| Operating pressure | 29 psi ... 101.5 psi |
| Operating pressure for max. vacuum | 0.38 MPa |
| Operating pressure for max. vacuum | 3.8 bar |
| Operating pressure for max. vacuum | 55.1 psi |
| Max. vacuum | 92 % |
| Nominal operating pressure | 0.4 MPa |
| Nominal operating pressure | 4 bar |
| Nominal operating pressure | 58 psi |
| Max. suction rate with respect to atmosphere | 21 l/min |
| Air supply time at nominal operating pressure with ejector pulse | 1 s |
| Analog output | 1 - 5 V |
| DC operating voltage range | 21.6 V ... 26.4 V |
| Duty cycle | 100% |
| Coil characteristics | 24 V DC: 1.0 W |

| Feature | Value |
|---|---|
| Certification | c UL us - Listed (OL) |
| KC characters | KC EMC |
| CE marking (see declaration of conformity) | As per EU EMC directive |
| UKCA marking (see declaration of conformity) | To UK instructions for EMC |
| Operating medium | Compressed air as per ISO 8573-1:2010 [7:4:4] |
| Information on operating and pilot media | Operation with oil lubrication not possible |
| Corrosion resistance class (CRC) | 2 - Moderate corrosion stress |
| LABS (PWIS) conformity | VDMA24364-B1/B2-L |
| Temperature of medium | 0 °C ... 50 °C |
| Noise level at nominal operating pressure | 68 dB(A) |
| Degree of protection | IP40 |
| Ambient temperature | 0 °C ... 50 °C |
| Product weight | 89 g |
| DC sensor operating voltage range | 10 V ... 30 V |
| Pressure measuring range | -0.1 MPa ... 0 MPa |
| Pressure measuring range | -1 bar ... 0 bar |
| Pressure measuring range | -14.5 psi ... 0 psi |
| Electrical connection input, function | Ejector pulse Vacuum generator |
| Electrical connection input, connection type | 2x plugs |
| Electrical input connection, connection technology | Connection diagram H |
| Electrical connection, input, number of pins/wires | 2 |
| Electrical connection for input, connection pattern | 00995626 |
| Electrical input connection, mounting type | Snap-locking |
| Electrical connection output, function | Sensor |
| Electrical connection output, connection type | Cable |
| Electrical connection output, connection technology | Open end |
| Electrical output connection, number of pins/wires | 3 |
| Cable characteristic | Suitable for energy chains |
| Cable diameter | 2.9 mm |
| Cable diameter tolerance | ± 0.1 mm |
| Cable length | 2.5 m |
| Nominal conductor cross section | 0.14 mm ² |
| Type of mounting | With through-hole |
| Pneumatic connection 1 | For pneumatic tubing outside diameter 6 mm |
| Pneumatic connection 3 | Pneumatic muffler open |
| Vacuum connection | For pneumatic tubing outside diameter 6 mm |
| Color cable sheath | Gray |
| Material of connecting thread | POM |
| Note on materials | RoHS-compliant |
| Seals material | NBR |
| Female nozzle material | POM |
| Compressed air filter material | POM |
| Housing material | PA-reinforced |
| Material of cable sheath | PVC |
| Material of adjusting screw | Steel |
| Muffler material | PA-reinforced PE |
| Material of screws | Steel |
| Material of jet nozzle | Wrought aluminum alloy |