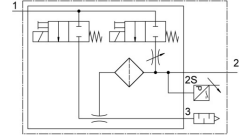
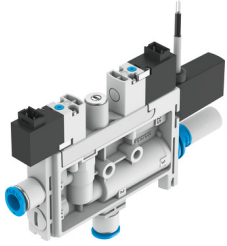


# Vacuum generator OVEL-5-H-10-PQ-VQ4-UA-C-A-B2PNLK-H3

FESTO

Part number: 8069570



[PDF](#) General operating condition

## Data sheet

Feature	Value
Nominal width of Laval nozzle	0.45 mm
Width dimension	10 mm
Muffler construction type	Open
Mounting position	Any
Ejector characteristics	High vacuum Standard
Grade of filtration	40 µm
Manual override	Non-detenting
Integrated function	Electric ejector pulse Flow control Pressure sensor Shut off valve, electric Compressed air filter Pneumatic muffler open
Structural design	T-shape
Switching element function	N/C contact/N/O contact switchable
Switching function	Freely programmable
Symbol	00995804
Valve function	Closed
Method of measurement	Piezoresistive pressure sensor with display
Display type	LED display 2-digit
Setting options	IO-Link® Teach-in Via display and pushbuttons
Operating pressure for max. suction rate	0.3 MPa
Operating pressure for max. suction rate	3 bar
Operating pressure for max. suction rate	43.5 psi
Operating pressure	0.2 MPa ... 0.7 MPa
Operating pressure	2 bar ... 7 bar
Operating pressure	29 psi ... 101.5 psi
Operating pressure for max. vacuum	0.42 MPa
Operating pressure for max. vacuum	4.2 bar
Operating pressure for max. vacuum	60.9 psi
Max. vacuum	89 %
Nominal operating pressure	0.4 MPa
Nominal operating pressure	4 bar
Nominal operating pressure	58 psi

Feature	Value
Max. suction rate with respect to atmosphere	4 l/min
Air supply time at nominal operating pressure with ejector pulse	2 s
DC operating voltage range	21.6 V ... 26.4 V
Duty cycle	100%
Switching output	PNP/NPN switchable
Coil characteristics	24 V DC: 1.0 W
Certification	c UL us - Listed (OL)
KC characters	KC EMC
CE marking (see declaration of conformity)	As per EU EMC directive
UKCA marking (see declaration of conformity)	To UK instructions for EMC
Operating medium	Compressed air as per ISO 8573-1:2010 [7:4:4]
Information on operating and pilot media	Operation with oil lubrication not possible
Corrosion resistance class (CRC)	2 - Moderate corrosion stress
LABS (PWIS) conformity	VDMA24364-B1/B2-L
Temperature of medium	0 °C ... 50 °C
Noise level at nominal operating pressure	64 dB(A)
Degree of protection	IP40
Ambient temperature	0 °C ... 50 °C
Product weight	74 g
DC sensor operating voltage range	18 V ... 30 V
Pressure measuring range	-0.1 MPa ... 0.1 MPa
Pressure measuring range	-1 bar ... 1 bar
Pressure measuring range	-14.5 psi ... 14.5 psi
Electrical connection input, function	Ejector pulse Vacuum generator
Electrical connection input, connection type	2x plugs
Electrical input connection, connection technology	Connection diagram H
Electrical connection, input, number of pins/wires	2
Electrical connection for input, connection pattern	00995626
Electrical input connection, mounting type	Snap-locking
Electrical connection output, function	Sensor
Electrical connection output, connection type	Cable
Electrical connection output, connection technology	Open end
Electrical output connection, number of pins/wires	3
Cable characteristic	Suitable for energy chains
Cable diameter	2.9 mm
Cable diameter tolerance	± 0.1 mm
Cable length	2.5 m
Nominal conductor cross section	0.14 mm <sup>2</sup>
Type of mounting	With through-hole
Pneumatic connection 1	for pneumatic tubing outside diameter 4 mm
Pneumatic connection 3	Pneumatic muffler open
Vacuum connection	For pneumatic tubing outside diameter 4 mm
Color cable sheath	Gray
Material of connecting thread	POM
Note on materials	RoHS-compliant
Seals material	NBR
Female nozzle material	POM
Compressed air filter material	POM
Housing material	PA-reinforced
Material of cable sheath	PVC
Material of adjusting screw	Steel

<b>Feature</b>	<b>Value</b>
Muffler material	PA-reinforced PE
Material of screws	Steel
Material of jet nozzle	Wrought aluminum alloy