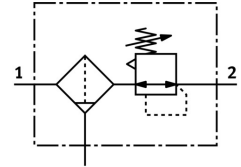


# Filter regulator PCRP-64-G12-12-E-R1-M-T18

Part number: 4787814

FESTO



[General operating condition](#)

## Data sheet

Feature	Value
Size	64
Series	P
Actuator lock	Adjusting screw with lock
Mounting position	Vertical +/- 5°
Grade of filtration	40 µm
Condensate drain	Manually rotating
Structural design	Filter regulator without pressure gauge
Conforms to standard	NACE MR0175/ISO 15156 (housing and bowl)
Max. condensate volume	30 ml
Controller function	With primary pressure compensation With secondary exhausting
Symbol	00991586
Pressure gauge	G1/4 prepared
Operating pressure	0.1 MPa ... 2 MPa
Operating pressure	1 bar ... 20 bar
Pressure regulation range	0.5 bar ... 12 bar
Max. pressure hysteresis	0.2 bar
Max. standard flow rate	6440 l/min
Standard nominal flow rate	3100 l/min
Explosion prevention and protection	Observe the information on the certificate Zone 1 (ATEX) Zone 2 (ATEX) Zone 21 (ATEX) Zone 22 (ATEX)
Operating medium	Compressed air as per ISO 8573-1:2010 [-:4:-] Inert gas
Information on operating and pilot media	Operation with oil lubrication possible (required for further use)
LABS (PWIS) conformity	VDMA24364 zone III
Storage temperature	-20 °C ... 80 °C
Air quality class at the output	Compressed air as per ISO 8573-1:2010 [7:4:4]
Temperature of medium	-20 °C ... 80 °C
Ambient temperature	-20 °C ... 80 °C
Product weight	1910 g
Type of mounting	Optionally: Line installation With mounting kit
Pressure gauge connection	G1/4

<b>Feature</b>	<b>Value</b>
Pneumatic connection 1	G1/2
Pneumatic connection 2	G1/2
Drain screw material	High-alloy stainless steel
Drain screw material number	1.4404/316L
Material of filter support	Cast stainless steel
Filter support material number	1.4409/CF3M(316L)
Note on materials	RoHS-compliant
Material of mounting bracket	High-alloy stainless steel
Seals material	CR NBR
Material of spring	High-alloy stainless steel
Compressed air filter material	High-alloy stainless steel
Compressed air filter material number	1.4404/316L
Housing material	Cast stainless steel
Material number of housing	1.4409/CF3M(316L)
Material of adjusting screw	High-alloy stainless steel
Material of bowl	Cast stainless steel
Bowl material number	1.4409/CF3M (316L)