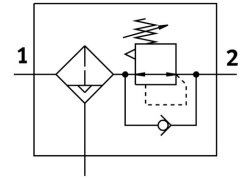



Filter regulator PCR-64-G12-12-E-R1-VC-T31

Part number: 8195734

FESTO



 General operating condition

Data sheet

| Feature | Value |
|--|--|
| Size | 64 |
| Series | P |
| Actuator lock | Adjusting screw with lock |
| Mounting position | Vertical +/- 5° |
| Grade of filtration | 40 µm |
| Condensate drain | Fully automatic |
| Structural design | Filter regulator with pressure gauge |
| Conforms to standard | NACE MR0175/ISO 15156 (housing and bowl) |
| Max. condensate volume | 30 ml |
| Controller function | With primary pressure compensation With secondary exhausting |
| Symbol | 00991588 |
| Pressure gauge | G1/4 prepared |
| Operating pressure | 0.2 MPa ... 1.2 MPa |
| Operating pressure | 2 bar ... 12 bar |
| Pressure regulation range | 0.5 bar ... 12 bar |
| Max. pressure hysteresis | 0.02 MPa |
| Max. pressure hysteresis | 0.2 bar |
| Max. pressure hysteresis | 2.9 psi |
| Max. standard flow rate | 6440 l/min |
| Standard nominal flow rate | 3100 l/min |
| Explosion prevention and protection | Observe the information on the certificate Zone 1 (ATEX) Zone 2 (ATEX) Zone 21 (ATEX) Zone 22 (ATEX) |
| Operating medium | Compressed air as per ISO 8573-1:2010 [-:4:-] Inert gas |
| Information on operating and pilot media | Operation with oil lubrication possible |
| LABS (PWIS) conformity | VDMA24364 zone III |
| Storage temperature | -10 °C ... 60 °C |
| Air quality class at the output | Compressed air as per ISO 8573-1:2010 [7:4:4] |
| Temperature of medium | 0 °C ... 60 °C |
| Ambient temperature | 0 °C ... 60 °C |
| Product weight | 2230 g |
| Type of mounting | Line installation |

| Feature | Value |
|--------------------------------|----------------------------|
| Pressure gauge connection | G1/4 |
| Pneumatic connection 1 | G1/2 |
| Pneumatic connection 2 | G1/2 |
| Pneumatic connection 3 | G1/8 |
| Material of filter support | POM |
| Note on materials | RoHS-compliant |
| Material of mounting bracket | High-alloy stainless steel |
| Seals material | NBR |
| Material of spring | High-alloy stainless steel |
| Compressed air filter material | PE |
| Housing material | Cast stainless steel |
| Material number of housing | 1.4409/CF3M(316L) |
| Material of adjusting screw | High-alloy stainless steel |
| Material of bowl | High-alloy stainless steel |
| Bowl material number | 1.4409/CF3M (316L) |