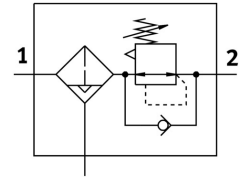



# Filter regulator PCR-64-N12-12-E-R1-VC-T31

Part number: 8195741

FESTO



 General operating condition

## Data sheet

Feature	Value
Size	64
Series	P
Actuator lock	Adjusting screw with lock
Mounting position	Vertical +/- 5°
Grade of filtration	40 µm
Condensate drain	Fully automatic
Structural design	Filter regulator with pressure gauge
Conforms to standard	NACE MR0175/ISO 15156 (housing and bowl)
Max. condensate volume	30 ml
Controller function	With primary pressure compensation With secondary exhausting
Symbol	00991588
Pressure gauge	G1/4 prepared
Operating pressure	0.2 MPa ... 1.2 MPa
Operating pressure	2 bar ... 12 bar
Pressure regulation range	0.5 bar ... 12 bar
Max. pressure hysteresis	0.02 MPa
Max. pressure hysteresis	0.2 bar
Max. pressure hysteresis	2.9 psi
Max. standard flow rate	6440 l/min
Standard nominal flow rate	3100 l/min
Explosion prevention and protection	Observe the information on the certificate Zone 1 (ATEX) Zone 2 (ATEX) Zone 21 (ATEX) Zone 22 (ATEX)
Operating medium	Compressed air as per ISO 8573-1:2010 [-:4:-] Inert gas
Information on operating and pilot media	Operation with oil lubrication possible
LABS (PWIS) conformity	VDMA24364 zone III
Storage temperature	-10 °C ... 60 °C
Air quality class at the output	Compressed air as per ISO 8573-1:2010 [7:4:4]
Temperature of medium	0 °C ... 60 °C
Ambient temperature	0 °C ... 60 °C
Product weight	2230 g
Type of mounting	Line installation

Feature	Value
Pressure gauge connection	G1/4
Pneumatic connection 1	1/2 NPT
Pneumatic connection 2	1/2 NPT
Pneumatic connection 3	1/8 NPT
Material of filter support	POM
Note on materials	RoHS-compliant
Material of mounting bracket	High-alloy stainless steel
Seals material	NBR
Material of spring	High-alloy stainless steel
Compressed air filter material	PE
Housing material	Cast stainless steel
Material number of housing	1.4409/CF3M(316L)
Material of adjusting screw	High-alloy stainless steel
Material of bowl	High-alloy stainless steel
Bowl material number	1.4409/CF3M (316L)