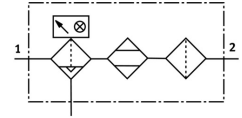


Desiccant air dryer PDAD-73-G1/2

Part number: 552174

FESTO



 General operating condition

Data sheet

Feature	Value
Mounting position	Vertical Horizontal
Structural design	Cold-regenerating adsorption dryer
Symbol	00992135
Inlet pressure 1	4 bar ... 16 bar
Power consumption at 24 VDC	9.6 W
Power consumption with 230 VAC	16 VA
Contamination level	2
KC characters	KC EMC
CE marking (see declaration of conformity)	as per EU pressure equipment directive As per EU EMC directive As per EU low voltage directive
UKCA marking (see declaration of conformity)	according to UK regulations for pressure equipment To UK instructions for EMC To UK instructions for electrical equipment
Operating medium	Compressed air as per ISO 8573-1:2010 [6:-:4]
Information on operating and pilot media	Operation with oil lubrication not possible no water in liquid form
Pressure dew point	-40 °C
Pressure dew point for reduced rate of flow	-70 °C
Corrosion resistance class (CRC)	2 - Moderate corrosion stress
LABS (PWIS) conformity	VDMA24364-B1/B2-L
Storage temperature	-20 °C ... 60 °C
Air quality class at the output	Compressed air as per ISO 8573-1:2010 [2:1:2] at -70°C Compressed air as per ISO 8573-1:2010 [2:2:2] at -40°C
Temperature of medium	2 °C ... 50 °C
Degree of protection	IP65
Protection class	II
Overvoltage category	II
Ambient temperature	5 °C ... 50 °C
Product weight	31000 g
Electrical connection 1, function	Power supply AC
Electrical connection 1, connection type	Socket
Electrical connection 1, connection technology	Plug pattern type C as per industry standard, 9.4 mm
Electrical connection 1, number of pins/wires	3
Electrical connection 1, occupied pins/wires	2
Electrical connection 2, function	Power supply DC
Electrical connection 2, connection type	Socket

Feature	Value
Electrical connection 2, connection technology	Connection diagram form C as per industrial standard, 9.4 mm
Electrical connection 2, number of pins/wires	4
Electrical connection 2, occupied pins/wires	2
Type of mounting	With accessories
Pneumatic connection 1	G1/2
Pneumatic connection 2	G1/2
Note on materials	RoHS-compliant
Housing material	Wrought aluminum alloy