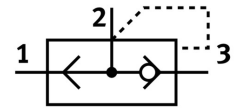



# Quick exhaust valve SE-1/2-B

Part number: 9688

FESTO



 General operating condition

## Data sheet

Feature	Value
Valve function	Quick exhaust
Pneumatic connection 1	G1/2
Pneumatic connection 2	G1/2
Type of mounting	Screw-in
Standard nominal flow rate exhaust air 6->5 bar	6480 l/min
Standard nominal flow rate pressurization 6->5 bar	4560 l/min
Operating pressure	0.3 bar ... 10 bar
Ambient temperature	-20 °C ... 75 °C
Housing material	Die-cast aluminum
Operating medium	Compressed air as per ISO 8573-1:2010 [7:-:-]
Nominal width	15 mm
Mounting position	Any
Symbol	00991459
Information on operating and pilot media	Operation with oil lubrication possible (required for further use)
LABS (PWIS) conformity	VDMA24364-B1/B2-L
Temperature of medium	-20 °C ... 75 °C
Product weight	200 g
Pneumatic connection 3	G1/2
Seals material	NBR