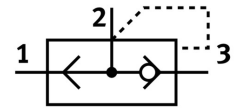
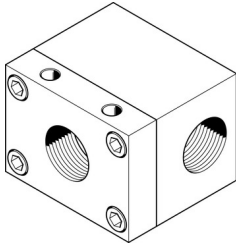



Quick exhaust valve SE-3/4

Part number: 2280

FESTO



 General operating condition

Data sheet

Feature	Value
Valve function	Quick exhaust
Pneumatic connection 1	G3/4
Pneumatic connection 2	G3/4
Type of mounting	With through-hole
Standard nominal flow rate exhaust air 6→5 bar	7500 l/min
Standard nominal flow rate pressurization 6→5 bar	2500 l/min
Operating pressure	0.5 bar ... 10 bar
Ambient temperature	-20 °C ... 75 °C
Housing material	Wrought aluminum alloy Anodized
Operating medium	Compressed air as per ISO 8573-1:2010 [7:4:4]
Nominal width	19 mm
Mounting position	Any
Symbol	00991459
Information on operating and pilot media	Operation with oil lubrication possible (required for further use)
LABS (PWIS) conformity	VDMA24364-B1/B2-L
Temperature of medium	-20 °C ... 75 °C
Product weight	710 g
Pneumatic connection 3	G3/4
Note on materials	RoHS-compliant
Seals material	NBR