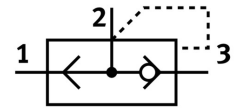



Quick exhaust valve SE-3/8-B

Part number: 9687

FESTO



 General operating condition

Data sheet

Feature	Value
Valve function	Quick exhaust
Pneumatic connection 1	G3/8
Pneumatic connection 2	G3/8
Type of mounting	Screw-in
Standard nominal flow rate exhaust air 6→5 bar	2760 l/min
Standard nominal flow rate pressurization 6→5 bar	2880 l/min
Operating pressure	0.2 bar ... 10 bar
Ambient temperature	-20 °C ... 75 °C
Housing material	Die-cast aluminum
Operating medium	Compressed air as per ISO 8573-1:2010 [7:-:-]
Nominal width	11 mm
Mounting position	Any
Symbol	00991459
Information on operating and pilot media	Operation with oil lubrication possible (required for further use)
LABS (PWIS) conformity	VDMA24364-B1/B2-L
Temperature of medium	-20 °C ... 75 °C
Product weight	125 g
Pneumatic connection 3	G3/8
Note on materials	RoHS-compliant
Seals material	NBR