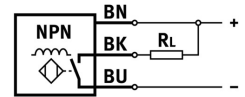
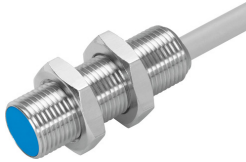


# Proximity sensor SIEH-M12B-NS-K-L-CR

Part number: 538254

FESTO



 [General operating condition](#)

## Data sheet

Feature	Value
Conforms to standard	EN 60947-5-2
Symbol	00991704
Certification	RCM compliance mark c UL us - Listed (OL)
CE marking (see declaration of conformity)	As per EU EMC directive
Rated operating distance	6 mm
Assured operating distance	4.86 mm
Reduction factors	Aluminum = 1.0 Stainless steel, 1 mm thick = 0.45 Stainless steel, 2 mm thick = 0.9 Copper = 0.85 Brass = 1.3 Steel St 37 = 1.0
Ambient temperature	-25 °C ... 70 °C
Switching output	NPN
Switching element function	N/O contact
Reproducibility, switching value FS	0.3 mm
Hysteresis	≤0.73 mm
Max. switching frequency	600 Hz
Max. output current	200 mA
Voltage drop	≤2 V
Inductive protective circuit	Installed Output current < 100 mA and switching frequency < 10 Hz
Short-circuit protection	Pulsed
DC operating voltage range	10 V ... 30 V
Residual ripple	20 %
Idle current	≤17 mA
Reverse polarity protection	for all electrical connections
Electrical connection	3-wire Cable
Material of cable sheath	TPE-U(PUR)
Size	M12
Type of mounting	With lock nut
Mounting type	Flush
Product weight	90 g
Housing material	High-alloy steel
Switching status indication	LED yellow

<b>Feature</b>	<b>Value</b>
Ambient temperature with flexible cable installation	-5 °C ... 70 °C
Degree of protection	IP67 IP69K
Resistance to sensor fitting pressure	80 bar
Corrosion resistance class (CRC)	2 - Moderate corrosion stress
LABS (PWIS) conformity	VDMA24364-B2-L
Selection of additional sensor information	With increased switching distance
Electrical output	NPN
Selection of sensor version	Fully stainless steel housing