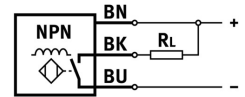
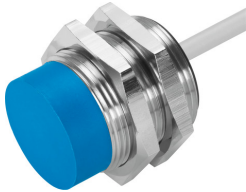


Proximity sensor SIEN-M30NB-NS-K-L

Part number: 150440

FESTO



[PDF](#) General operating condition

Data sheet

Feature	Value
Conforms to standard	EN 60947-5-2
Symbol	00991704
Certification	RCM compliance mark c UL us - Listed (OL)
CE marking (see declaration of conformity)	As per EU EMC directive
Note on materials	RoHS-compliant
Rated operating distance	15 mm
Assured operating distance	12.15 mm
Reduction factors	Aluminum = 0.5 Stainless steel St 18/8 = 0.85 Copper = 0.43 Brass = 0.53 Steel St 37 = 1.0
Ambient temperature	-25 °C ... 70 °C
Repetition accuracy	0.75 mm
Switching output	NPN
Switching element function	N/O contact
Hysteresis	≤1.65 mm
Max. switching frequency	700 Hz
Max. output current	200 mA
Voltage drop	≤2 V
Short-circuit protection	Pulsed
DC operating voltage range	10 V ... 30 V
Residual ripple	+/- 20 %
Idle current	≤10 mA
Reverse polarity protection	for all electrical connections
Electrical connection	3-wire Cable
Cable length	2.5 m
Material of cable sheath	TPE-U(PUR)
Size	M30x1.5
Type of mounting	With lock nut
Tightening torque	40 Nm
Mounting type	Not flush
Product weight	150 g
Housing material	Brass PBTP Chrome-plated

Feature	Value
Switching status indication	LED yellow
Ambient temperature with flexible cable installation	-5 °C ... 70 °C
Degree of protection	IP67
Surge resistance	0.8 kV
LABS (PWIS) conformity	VDMA24364-B2-L
Contamination level	3
Selection of additional sensor information	With standard switching distance
Electrical output	NPN
Selection of sensor version	Standard