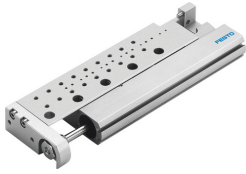



Mini slide SLF-10-20-P-A

Part number: 170507

FESTO



 [General operating condition](#)

Data sheet

Feature	Value
Stroke	20 mm
Adjustable end position range/length	5 mm
Piston diameter	10 mm
Drive unit operating mode	Yoke
Cushioning	Elastic cushioning rings/pads at both ends
Mounting position	Any
Guide	Ball bearing cage guide
Structural design	Yoke Piston Piston rod Ball roller guide Slide
Position sensing	For proximity sensor
Symbol	00991737
Operating pressure	0.1 MPa ... 1 MPa
Operating pressure	1 bar ... 10 bar
Operating pressure	14.5 psi ... 145 psi
Mode of operation	Double-acting
Operating medium	Compressed air as per ISO 8573-1:2010 [7:4:4]
Information on operating and pilot media	Operation with oil lubrication possible (required for further use)
Corrosion resistance class (CRC)	0 - No corrosion stress
LABS (PWIS) conformity	VDMA24364-B2-L
Ambient temperature	-20 °C ... 60 °C
Impact energy in the end positions	0.05 J
Max. force F _y	150 N
Max. force F _z	150 N
Max. torque M _x	1.1 Nm
Max. torque M _y	1.1 Nm
Max. torque M _z	0.7 Nm
Theoretical force at 6 bar, retracting	40 N
Theoretical force at 6 bar, advancing	47 N
Moving mass	48 g
Product weight	156 g
Basic weight with 0 mm stroke	156 g
Alternative connections	See product drawing
Type of mounting	With through-hole
Pneumatic connection	M5

Feature	Value
Note on materials	RoHS-compliant
Cover material	Wrought aluminum alloy
Seals material	HNBR
Housing material	Wrought aluminum alloy
Piston rod material	High-alloy stainless steel