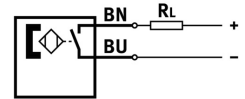
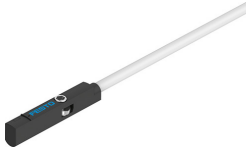


# Proximity sensor SMT-10M-ZS-24V-E-2,5-L-OE

Part number: 551382

FESTO



 [General operating condition](#)

## Data sheet

Feature	Value
Design	for round slot
Conforms to standard	EN 60947-5-2
Symbol	00991144
Certification	RCM compliance mark
CE marking (see declaration of conformity)	As per EU EMC directive As per EU RoHS directive
UKCA marking (see declaration of conformity)	To UK instructions for EMC To UK RoHS instructions
Special features	Oil-resistant
Note on materials	RoHS-compliant Halogen-free
Application note	<a href="https://www.festo.com/Drive-Sensor-Overview">https://www.festo.com/Drive-Sensor-Overview</a>
Measured variable	Position
Measuring principle	Magneto-resistive
Ambient temperature	-40 °C ... 70 °C
Repetition accuracy	0.2 mm
Switching output	Non-contact, 2-wire
Switching element function	N/O contact
On time	≤1 ms
Switch-off time	≤1 ms
Max. switching frequency	150 Hz
Max. output current	100 mA
Max. output current in mounting kits	50 mA
Max. switching capacity DC	2.4 W
Max. switching capacity DC in mounting kits	1.2 W
Voltage drop	≤6 V
Short-circuit protection	yes
Overload protection	Available
Rated operating voltage DC	24 V
DC operating voltage range	7 V ... 30 V
Reverse polarity protection	for all electrical connections
Electrical connection 1, connection type	Cable
Electrical connection 1, connection technology	Open end
Electrical connection 1, number of pins/wires	2
Connection outlet orientation	Longitudinal

Feature	Value
Connector cable test conditions	Flexural strength: as per Festo standard Test conditions on request Torsional resistance: > 300 000 cycles, ±270°/0.1 m Energy chain > 5 million cycles, bending radius 28 mm
Cable length	2.5 m
Cable characteristic	Suitable for energy chains/robot applications
Material of cable sheath	TPE-U(PUR)
Type of mounting	Screwed tightly Can be inserted in slot from above
Max. tightening torque	0.4 Nm
Mounting position	Any
Product weight	14.6 g
Housing material	PA-reinforced High-alloy stainless steel
Switching status indication	LED yellow
Ambient temperature with flexible cable installation	-20 °C ... 70 °C
Degree of protection	IP65 IP68
LABS (PWIS) conformity	VDMA24364-B2-L
Suitability for the production of Li-ion batteries	Metals with more than 1% by mass of copper, zinc or nickel by mass are excluded from use. Exceptions are nickel in steel, chemically nickel-plated surfaces, printed circuit boards, cables, electrical plug connectors and coils
Cleanroom class	Class 4 according to ISO 14644-1