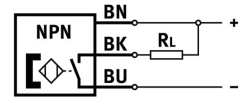
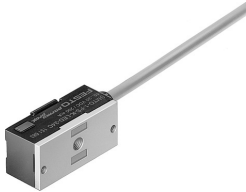


Proximity sensor SMT0-1-NS-K-LED-24-C

Part number: 151684

FESTO



[General operating condition](#)

Data sheet

Feature	Value
Design	Block design
Based on norm	EN 60947-5-2
Symbol	00991149
Certification	RCM compliance mark
CE marking (see declaration of conformity)	As per EU EMC directive As per EU RoHS directive
UKCA marking (see declaration of conformity)	To UK instructions for EMC To UK RoHS instructions
Note on materials	RoHS-compliant
Measured variable	Position
Measuring principle	Magneto-inductive
Ambient temperature	-25 °C ... 70 °C
Repetition accuracy	0.2 mm
Switching output	NPN
Switching element function	N/O contact
Hysteresis	0.1 mm ... 1.5 mm
On time	≤1 ms
Switch-off time	≤1 ms
Max. switching frequency	1000 Hz
Max. output current	200 mA
Max. switching capacity DC	6 W
Voltage drop	≤3 V
Inductive protective circuit	Adapted to MZ, MY and ME coils
Residual current	≤0.01 mA
Short-circuit protection	Pulsed
Overload protection	Available
DC operating voltage range	10 V ... 30 V
Residual ripple	10 %
Reverse polarity protection	for all electrical connections
Electrical connection 1, connection type	Cable
Electrical connection 1, connection technology	Open end
Electrical connection 1, number of pins/wires	3
Connection outlet orientation	Longitudinal
Cable length	2.5 m
Cable characteristic	Standard
Color cable sheath	Gray

Feature	Value
Material of cable sheath	PVC
Insulating sheath material	PVC
Wire ends	Cable end sleeve
Type of mounting	With accessories
Mounting position	Any
Product weight	85 g
Housing colour	Black
Housing material	PET Die-cast zinc
Switching status indication	LED yellow
Ambient temperature with flexible cable installation	-5 °C ... 70 °C
Degree of protection	IP67
LABS (PWIS) conformity	VDMA24364-B2-L